



Notes
 1. Do not scale from this drawing
 2. To be read in conjunction with Project Risk Register REF: XXX
 3. To be read in conjunction with all other Landscape Architect's drawings

- KEY**
- Existing tree retained
 - Existing tree removed
 - Proposed tree
 To include native species as RCT tree policy indicates. Single species not to exceed 10% as a climate change resilience measure. Trees on rain gardens to have tolerant of drought and water-logging
 - Proposed amenity grass
 Mowed regularly to allow activities and play opportunities
 - Proposed Bio-diverse grass area
 To include bulbs; grass seeds to be sown at less rate to allow natural regeneration of native seedbank. Mowed less regularly.
 - Rain Gardens
 Proposed planting species in line with RCT biodiversity policies and feedback. Species capable of tolerating drought and water-logging periods
 - Woodland Enhancement Planting
 In line with RCT biodiversity policies and feedback
 - Proposed hedge
 Comprised of more than one native species

ID	RISK	MITIGATION	DATE	MITIGATED
RESIDUAL PROJECT RISKS				

DATE	REV	DESCRIPTION OF REVISION	DRAWN BY	APPROVED BY
04/10/2021	P02	Issued for Planning	MDS	BH
04/10/2021	P01	Issued for stage 3	MDS	BH

REVISIONS

STATUS
S2 - FOR PLANNING

Ares Landscape Architects LTD
 Gatecrasher,
 51 Eyre Lane
 Sheffield
 S1 4RB
 t: 0114 276 2000
 e: hello@aresdesign.co.uk
 w: ares.eu.com

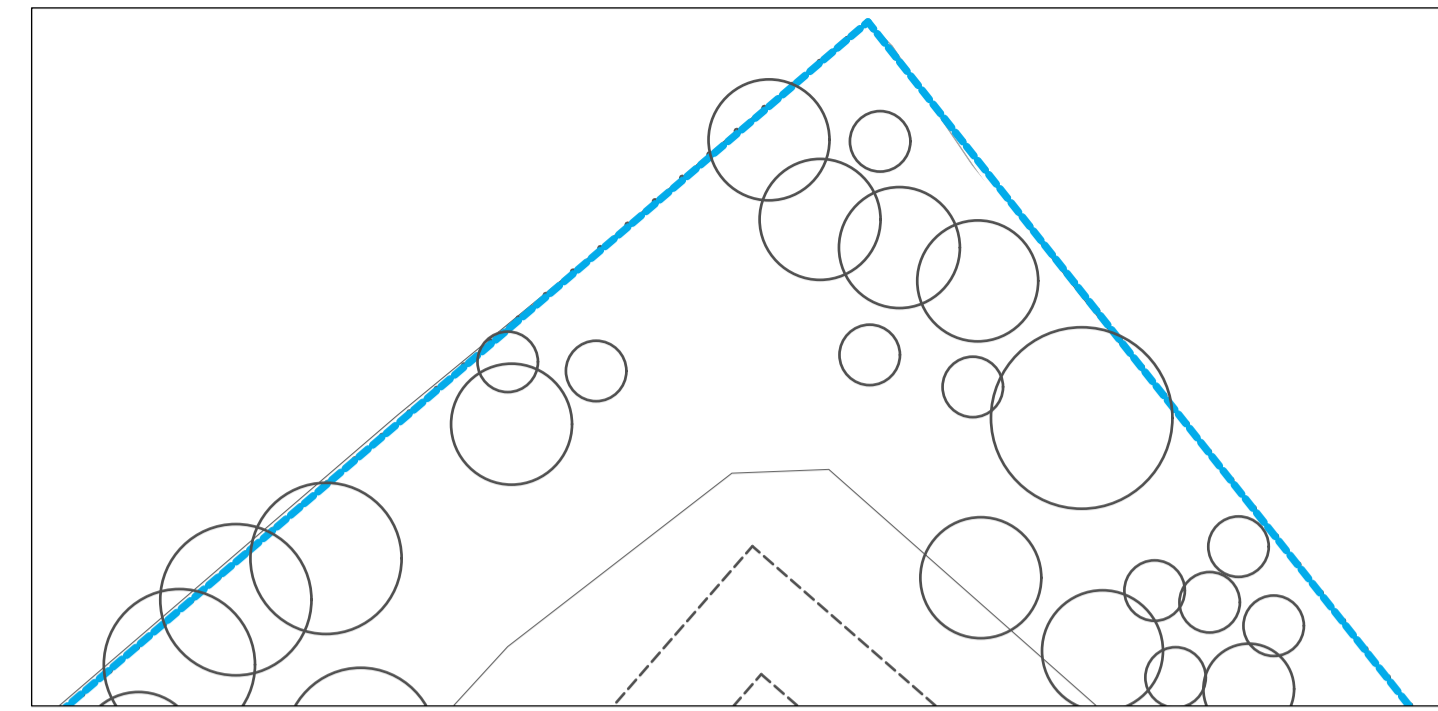
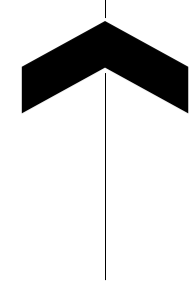
CLIENT:
Sheppard Robson Architects

PROJECT TITLE:
Llanilltud Faerdref Primary School

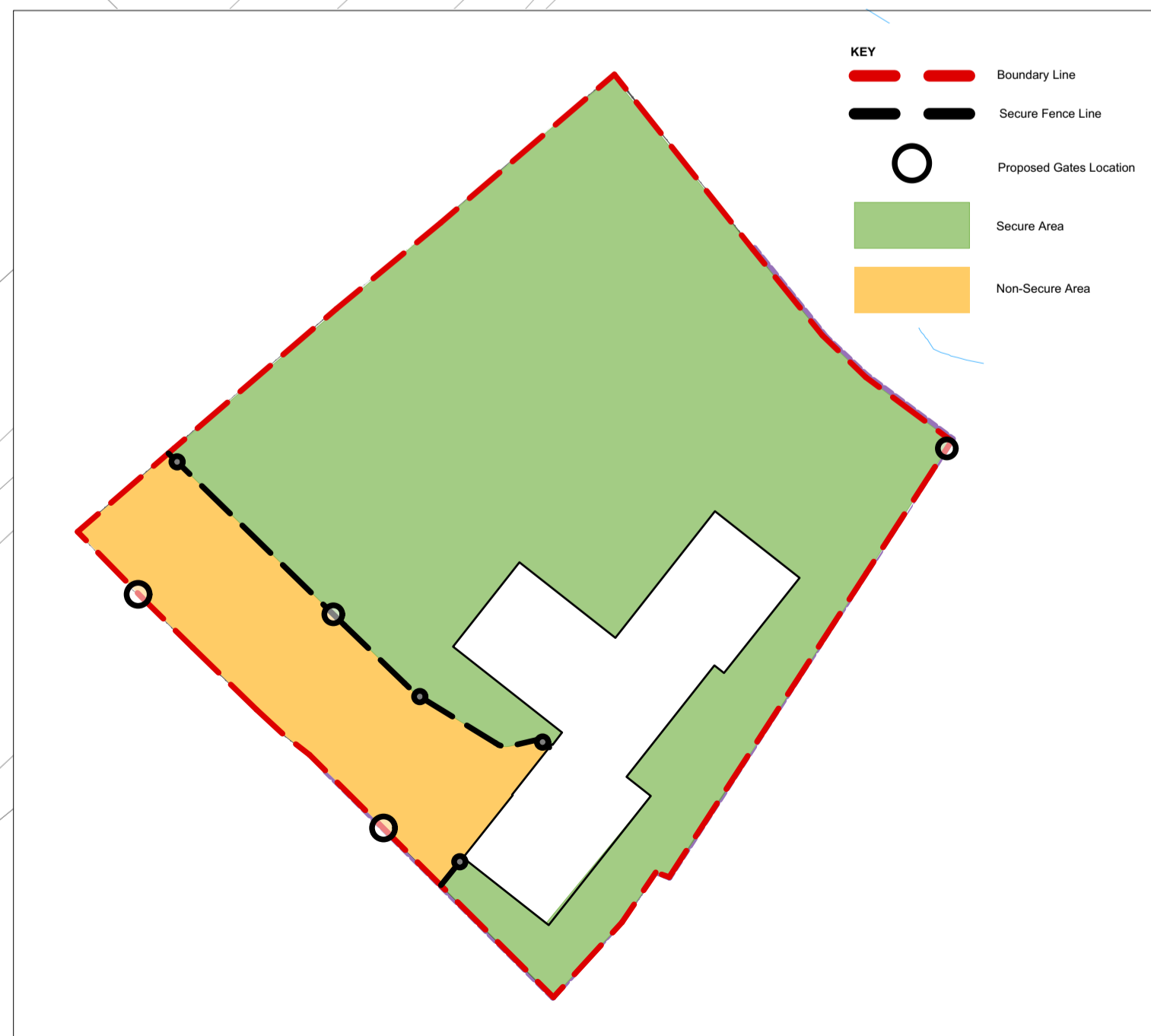
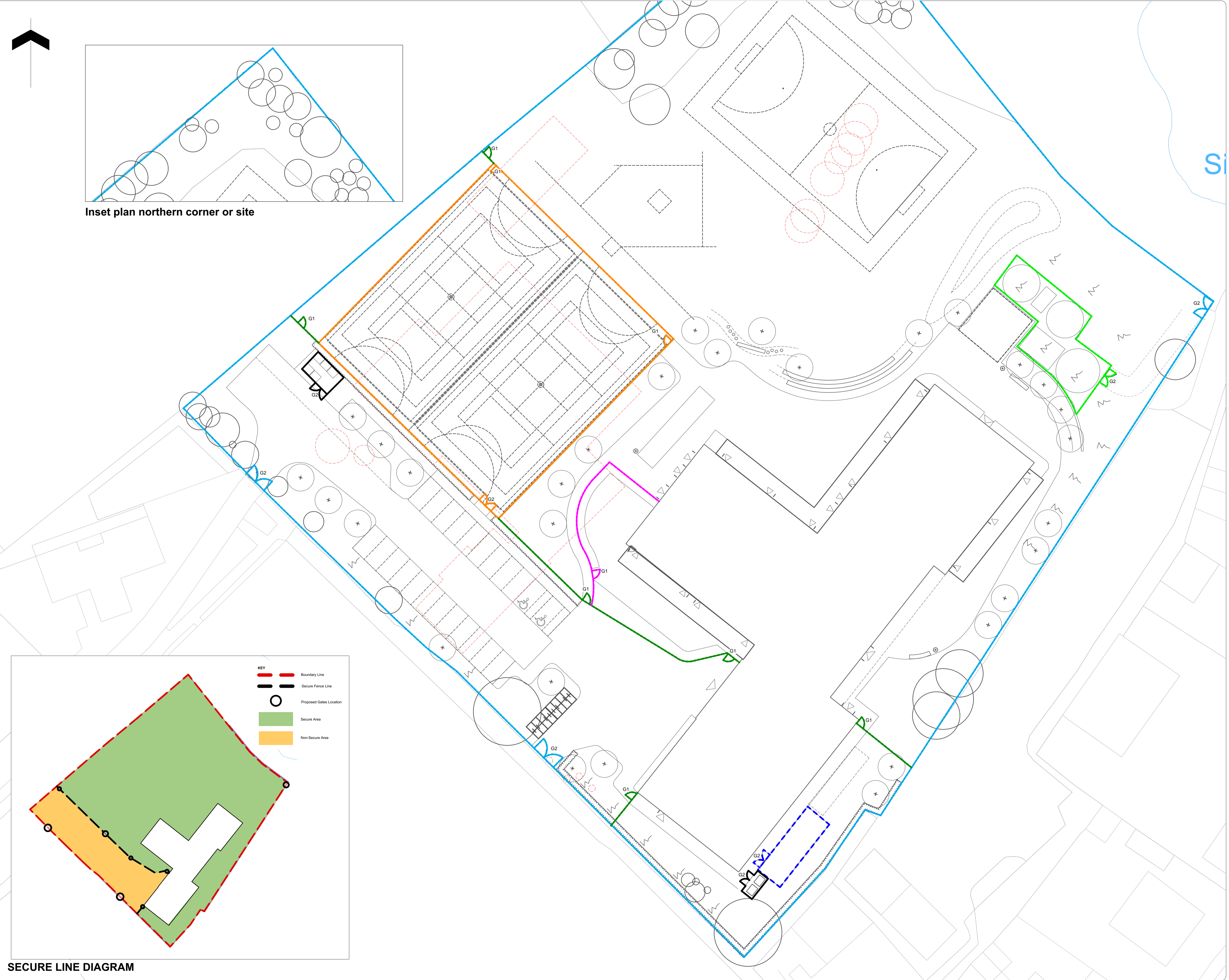
DRAWING TITLE:
Planting Strategy

DRAWING SCALE:	DRAWN BY:	DRAWN DATE:
NTS	MDS	01/10/2021
PAPER SIZE:	APPROVED BY:	ALA PROJECT CODE:
A1	LS	ALA679

DRAWING NUMBER: **RH0301-ALA-00-XX-DR-L-00013 S2** STATUS: **S2** REVISION: **P02**



Inset plan northern corner of site



SECURE LINE DIAGRAM

Notes

1. Do not scale from this drawing
2. To be read in conjunction with Project Risk Register REF: XXX
3. To be read in conjunction with all other Landscape Architect's drawings

KEY

	F1	Metal Hoop Top Fencing 1.2m Height Specification TBC
	F2	Perimeter Security Fencing 2.4m Height Weldmesh Specification TBC
	F3	Internal Security Fencing 1.8m Height Weldmesh Specification TBC
	F4	MUGA Sports Fencing 3m Height Weldmesh Specification TBC
	F5	Sprinkler Tank Fencing 3m Height Closeboard Timber Specification TBC
	F6	Air Source Heat Pump Fencing 1.8m Height Metal Louvers Specification TBC
	F7	Bin Store Enclosure Brick Specification TBC
	G1	Single Leaf Gates Specification TBC
	G2	Double Leaf Gates Specification TBC

ID	RISK	MITIGATION	DATE MITIGATED
RESIDUAL PROJECT RISKS			

DATE	REV	DESCRIPTION OF REVISION	DRAWN BY	APPROVED BY
04/10/2021	P03	Issued for Planning	MDS	BH
28/09/2021	P02	Issued for Stage 3	MDS	BH

REVISIONS

STATUS
S2 - FOR PLANNING

Ares Landscape Architects LTD
Gatecrasher,
51 Eyre Lane
Sheffield
S1 4RB
t: 0114 276 2000
e: hello@aresdesign.co.uk
w: ares.eu.com

CLIENT:
Sheppard Robson Architects

PROJECT TITLE:
Llanilltud Faerdref Primary School

DRAWING TITLE:
Fencing and Security Strategy

DRAWING SCALE: 1:500	DRAWN BY: MDS	DRAWN DATE: 25/05/2021
PAPER SIZE: A1	APPROVED BY: LS	ALA PROJECT CODE: ALA679

DRAWING NUMBER: **RH0301-ALA-00-XX-DR-L-00007 S2** STATUS: **P03** REVISION:

Notes

- 1. Do not scale from this drawing
- 2. To be read in conjunction with Project Risk Register REF: XXX
- 3. To be read in conjunction with all other Landscape Architect's drawings


KEY

RESIDUAL PROJECT RISKS

ID	RISK	MITIGATION	DATE MITIGATED
04/10/2021	P02	Issued for Planning	MDS BH
04/10/2021	P01	Issued for Stage 3	MDS BH

REVISIONS

STATUS
S2 - FOR PLANNING



Ares Landscape Architects LTD
Galacrasher,
51 Eyre Lane
Sheffield
S1 4RB
t: 0114 276 2000
e: hello@aresdesign.co.uk
w: ares.eu.com

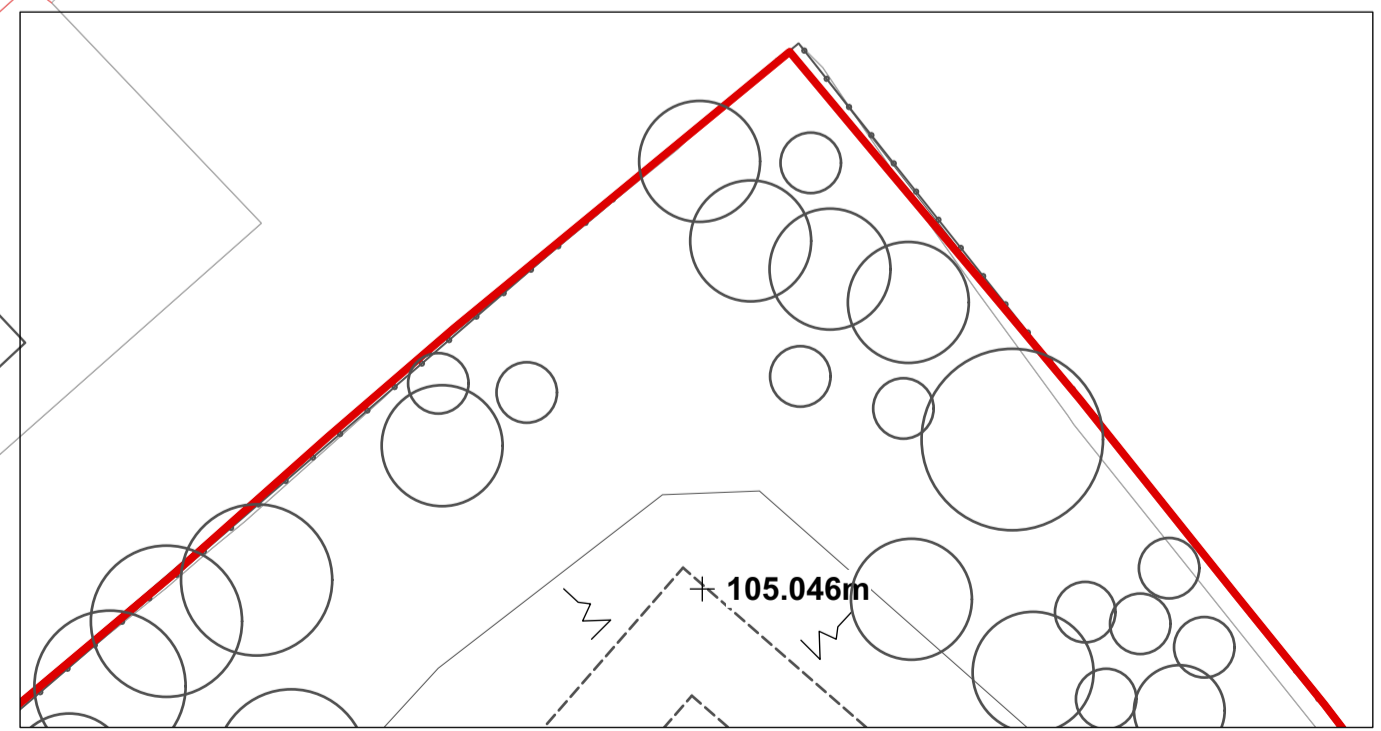
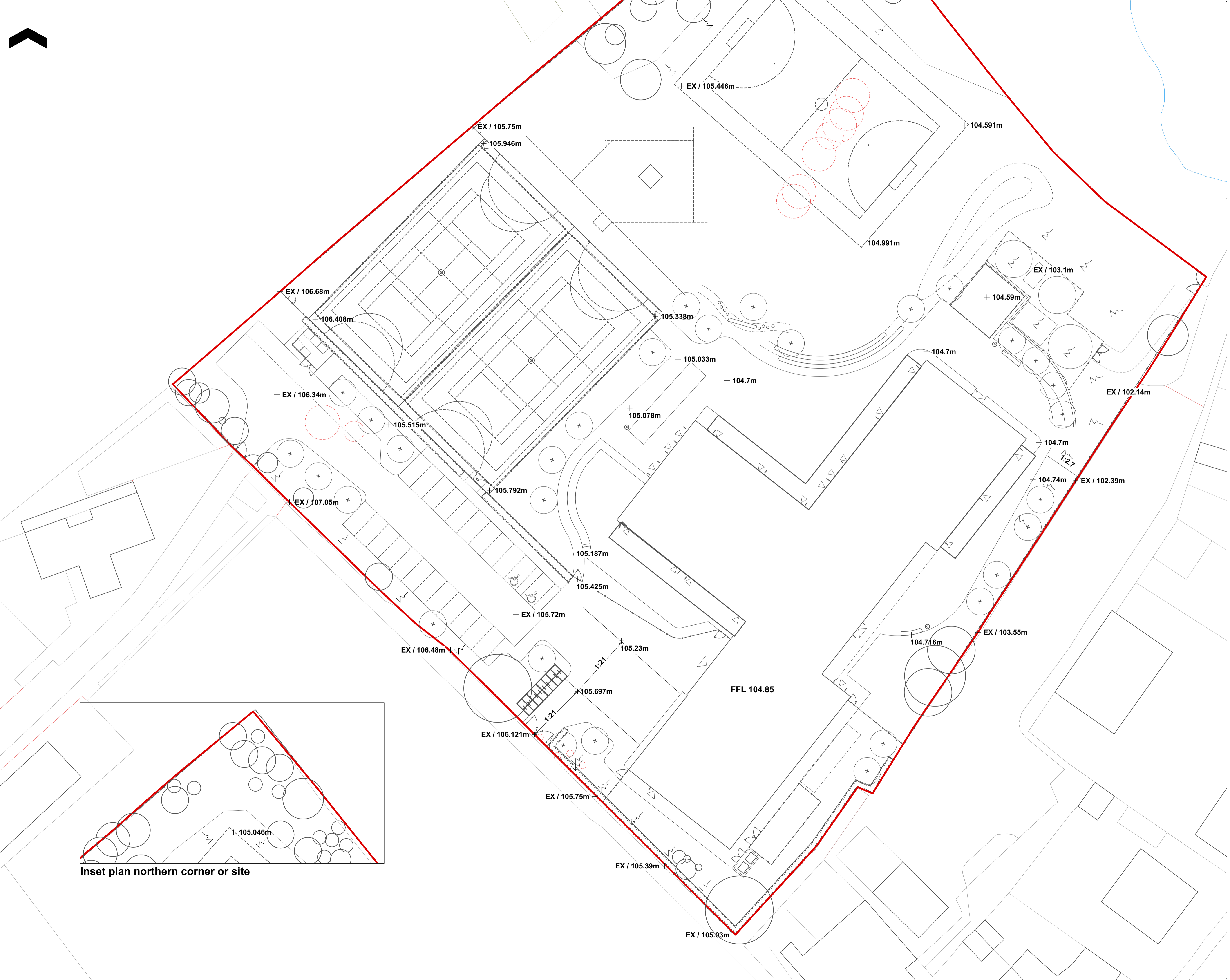
CLIENT:
Sheppard Robson Architects

PROJECT TITLE:
Llanilltud Faerdref Primary School

DRAWING TITLE:
Outline Levels

DRAWING SCALE:	DRAWN BY:	DRAWN DATE:
NTS	MDS	04/10/2021
PAPER SIZE:	APPROVED BY:	ALA PROJECT CODE:
A1	LS	ALA679

DRAWING NUMBER: RH0301-ALA-00-XX-DR-L-00014 S2 STATUS: S2 REVISION: P02



Inset plan northern corner of site

REFER TO DRAWING RH0301-ALA-00-XX-DR-L-00019

- Notes**
1. Do not scale from this drawing
 2. To be read in conjunction with Project Risk Register REF: XXX
 3. To be read in conjunction with all other Landscape Architect's drawings

KEY

- Site Boundary
- Proposed Building
- Existing Building to be demolished
- Existing Tree
- Existing Tree to be removed

Planting

- Proposed Tree (Refer to Planting Plan)
- Grass Seed (Refer to Planting Plan)
- Amenity Planting (Refer to Planting Plan)
- Hedge Planting (Refer to Planting Plan)

Paving

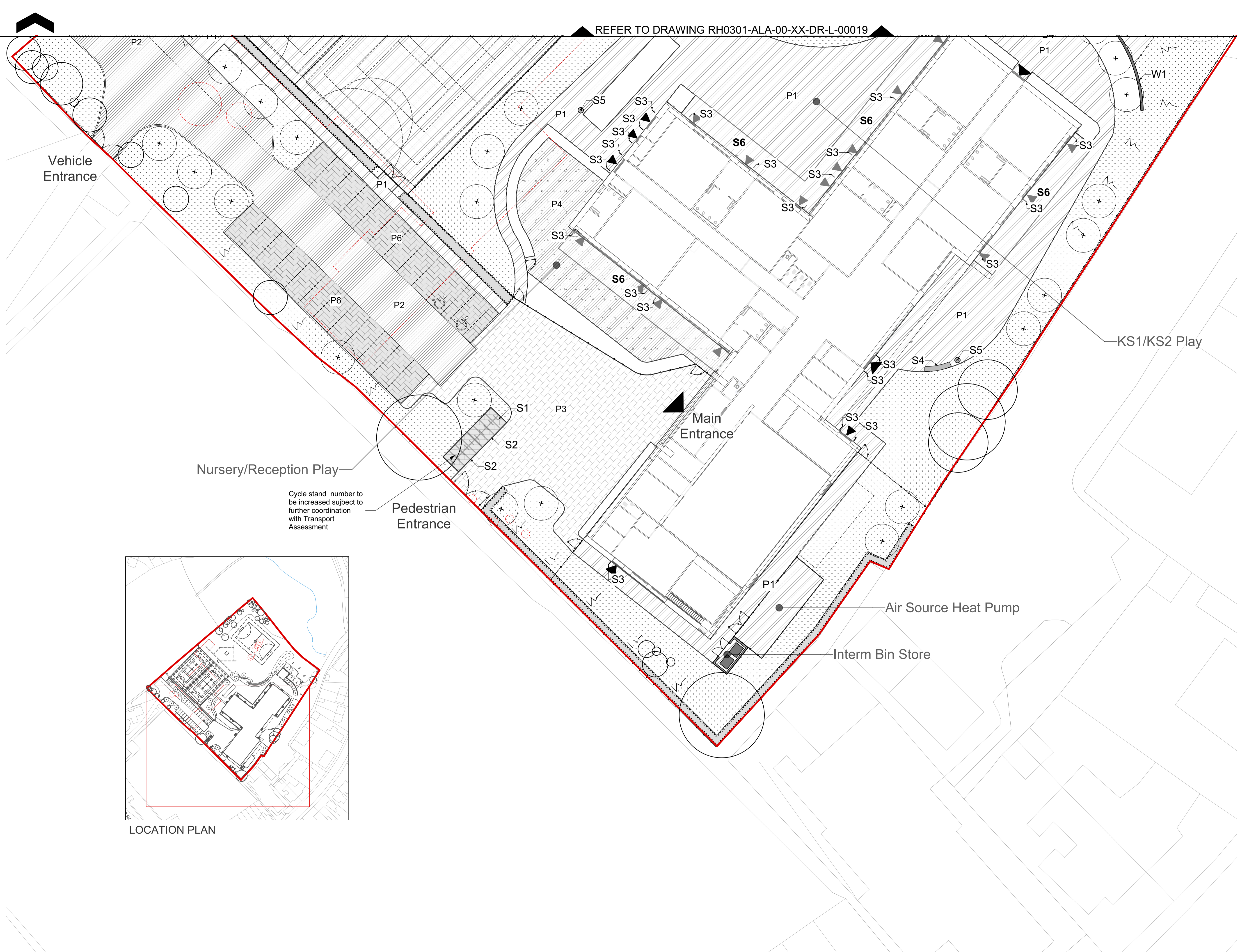
- P1 Pedestrian Macadam (Ref P1 To Engineer's Specification)
- P2 Vehicular Macadam (Ref P2 To Engineer's Specification)
- P3 Concrete Block Paving (Ref P3 Specification TBC)
- P4 Wet pour surfacing (Ref P4 Specification TBC)
- P5 MUGA Permeable Surface (Ref P5 To Engineer's Specification)
- P6 Permeable Block Paving (Ref P6 To Engineer's Specification)

Furniture

- S1 Cycle Stands (Specification TBC)
- S2 Cycle Shelter (Specification TBC)
- S3 Door Protection Barrier (100x40mm Specification TBC)
- S4 Seating Bench (500 x 200mm Specification TBC)
- S5 Litter Bin (500 x 200mm Specification TBC)

Fencing and Structures

- Proposed Fencing (Refer to Fencing and Security Strategy for details)
- Proposed Gates (Refer to Fencing and Security Strategy for details)
- W1 Proposed Retaining Wall (Specification TBC)
- S6 Canopy / Building Overhang



Nursery/Reception Play

Cycle stand number to be increased subject to further coordination with Transport Assessment

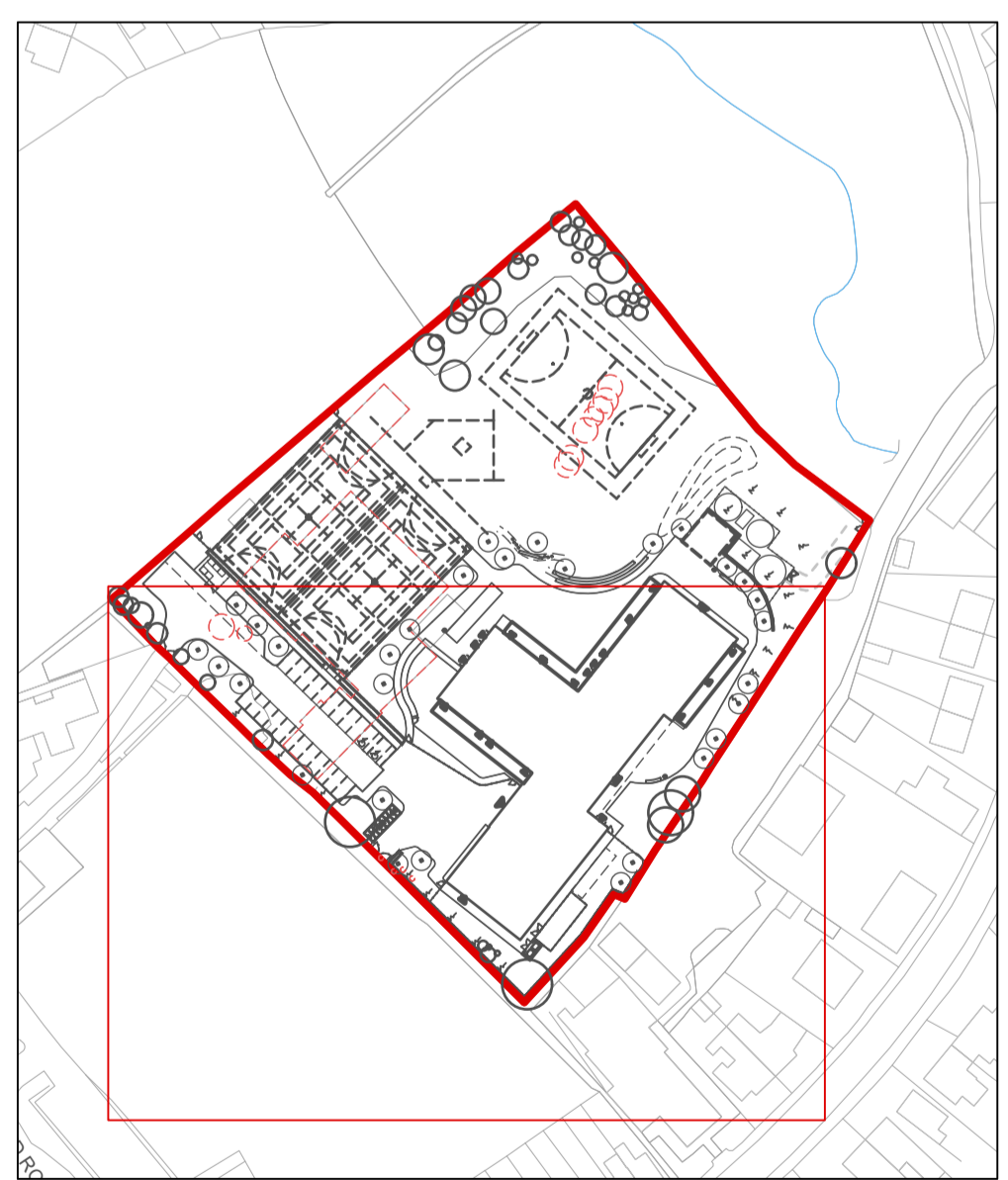
Pedestrian Entrance

Main Entrance

KS1/KS2 Play

Air Source Heat Pump

Interm Bin Store



LOCATION PLAN

ID	RISK	MITIGATION	DATE MITIGATED
RESIDUAL PROJECT RISKS			

DATE	REV	DESCRIPTION OF REVISION	DRAWN BY	APPROVED BY
14/10/2021	P03	Note added to cycle stand	MDS	BH
04/10/2021	P02	Issued for Planning	MDS	BH
04/10/2021	P01	Issued for Stage 3	MDS	BH

REVISIONS

STATUS
S2 - FOR PLANNING

ares LANDSCAPE ARCHITECTS

Ares Landscape Architects LTD
Gatecrasher,
51 Eyre Lane
Sheffield
S1 4RB
t: 0114 276 2000
e: hello@aresdesign.co.uk
w: ares.eu.com

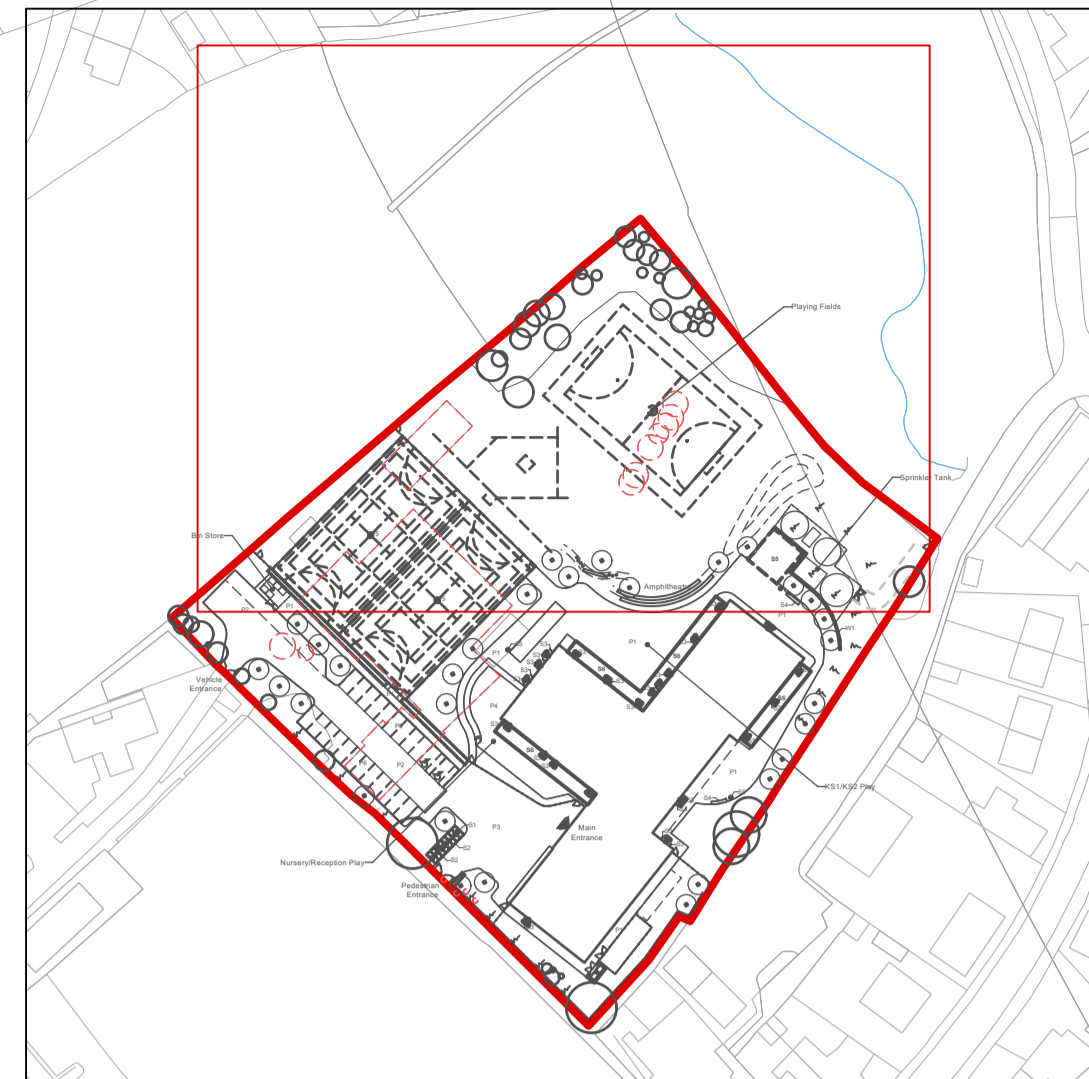
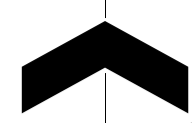
CLIENT:
Sheppard Robson Architects

PROJECT TITLE:
Llanilltud Faerdref Primary School

DRAWING TITLE:
Detailed Hard and Soft Landscape General Arrangement 1 of 2

DRAWING SCALE: 1:200	DRAWN BY: MDS	DRAWN DATE: 28/09/2021
PAPER SIZE: A1	APPROVED BY: LS	ALA PROJECT CODE: ALA679

DRAWING NUMBER: **RH0301-ALA-00-XX-DR-L-00018 S2** STATUS: **FOR PLANNING** REVISION: **P03**



LOCATION PLAN

Notes

1. Do not scale from this drawing
2. To be read in conjunction with Project Risk Register REF: XXX
3. To be read in conjunction with all other Landscape Architect's drawings

KEY

- Site Boundary
- Proposed Building
- Existing Building to be demolished
- Existing Tree
- Existing Tree to be removed
- Planting**
- Proposed Tree Refer to Planting Plan
- Grass Seed Refer to Planting Plan
- Amenity Planting Refer to Planting Plan
- Hedge Planting Refer to Planting Plan
- Paving**
- Pedestrian Macadam [Ref P1] To Engineer's Specification
- Vehicular Macadam [Ref P2] To Engineer's Specification
- Concrete Block Paving [Ref P3] Specification TBC
- Wet pour surfacing [Ref P4] Specification TBC
- MUGA Permeable Surface [Ref P5] To Engineer's Specification
- Permeable Block Paving [Ref P6] To Engineer's Specification
- Furniture**
- S1 Cycle Stands Specification TBC
- S2 Cycle Shelter Specification TBC
- S3 Door Protection Barrier 100x60mm Specification TBC
- S4 Seating Bench 500 x 2000mm Specification TBC
- S5 Litter Bin 500 x 2000mm Specification TBC
- Fencing and Structures**
- Proposed Fencing Refer to Fencing and Security Strategy for details
- Proposed Gates Refer to Fencing and Security Strategy for details
- W1 Proposed Retaining Wall Specification TBC
- S6 Canopy / Building Overhang



Proposed Trim Trail

Playing Fields

Sprinkler Tank

MUGA 2no Courts

Bin Store

Amphitheatre

REFER TO DRAWING RH0301-ALA-00-XX-DR-L-00018

ID	RISK	MITIGATION	DATE MITIGATED
RESIDUAL PROJECT RISKS			

DATE	REV	DESCRIPTION OF REVISION	DRAWN BY	APPROVED BY
19/10/2021	P03	Amended following comments	MDS	BH
04/10/2021	P02	Issued for Planning	MDS	BH
04/10/2021	P01	Issued for Stage 3	MDS	BH

REVISIONS

STATUS
S2 - FOR PLANNING

Ares Landscape Architects LTD
Gatecrasher,
51 Eyre Lane
Sheffield
S1 4RB
t: 0114 276 2000
e: hello@aresdesign.co.uk
w: ares.eu.com

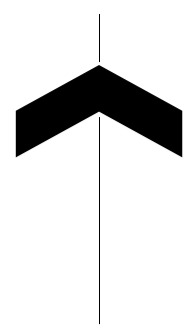
CLIENT:
Sheppard Robson Architects

PROJECT TITLE:
Llanilltud Faerdref Primary School

DRAWING TITLE:
Detailed Hard and Soft Landscape General Arrangement 1 of 2

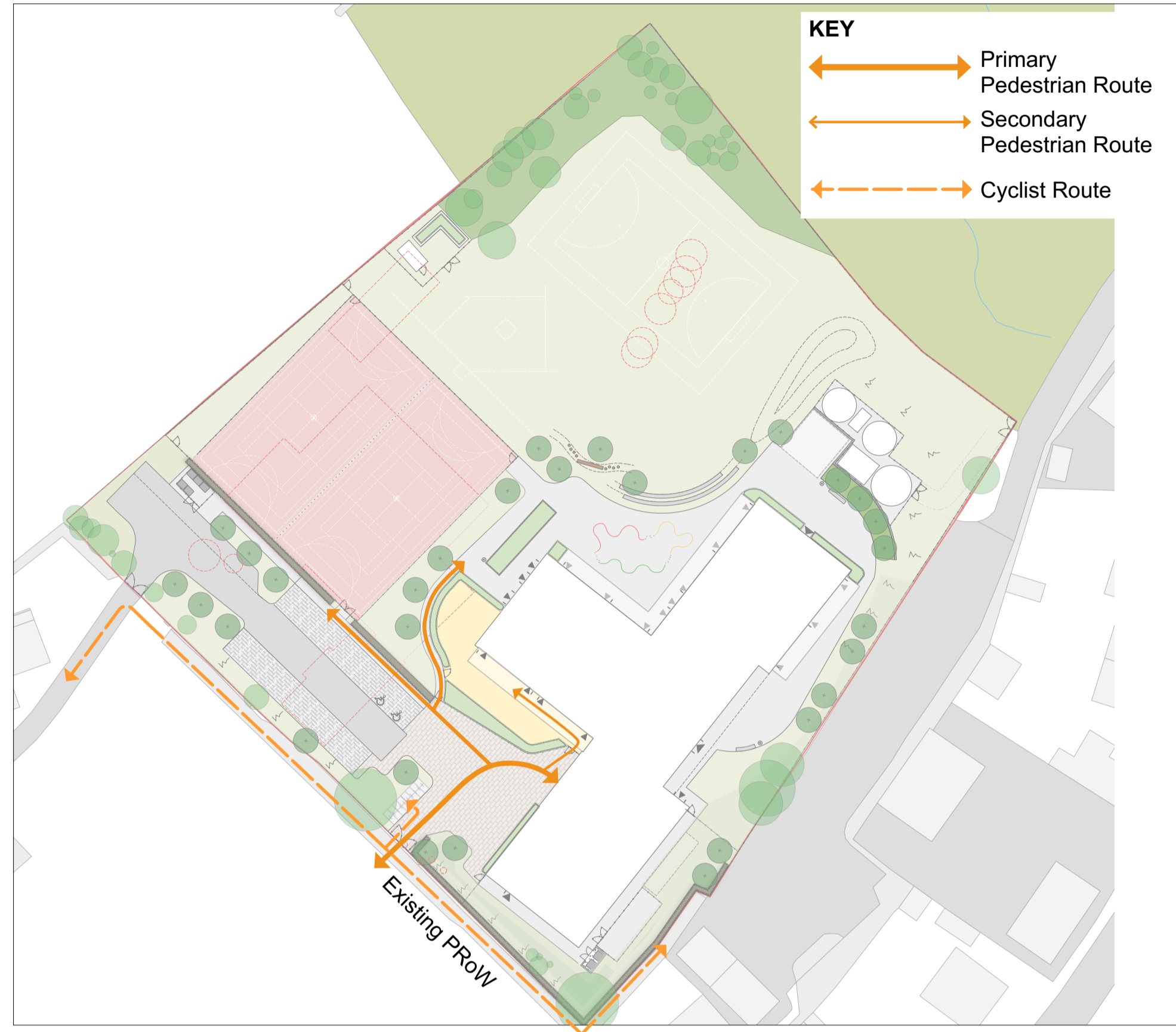
DRAWING SCALE: 1:200	DRAWN BY: MDS	DRAWN DATE: 28/09/2021
PAPER SIZE: A1	APPROVED BY: LS	ALA PROJECT CODE: ALA679

DRAWING NUMBER: **RH0301-ALA-00-XX-DR-L-00019 S2** STATUS: **P03** REVISION:

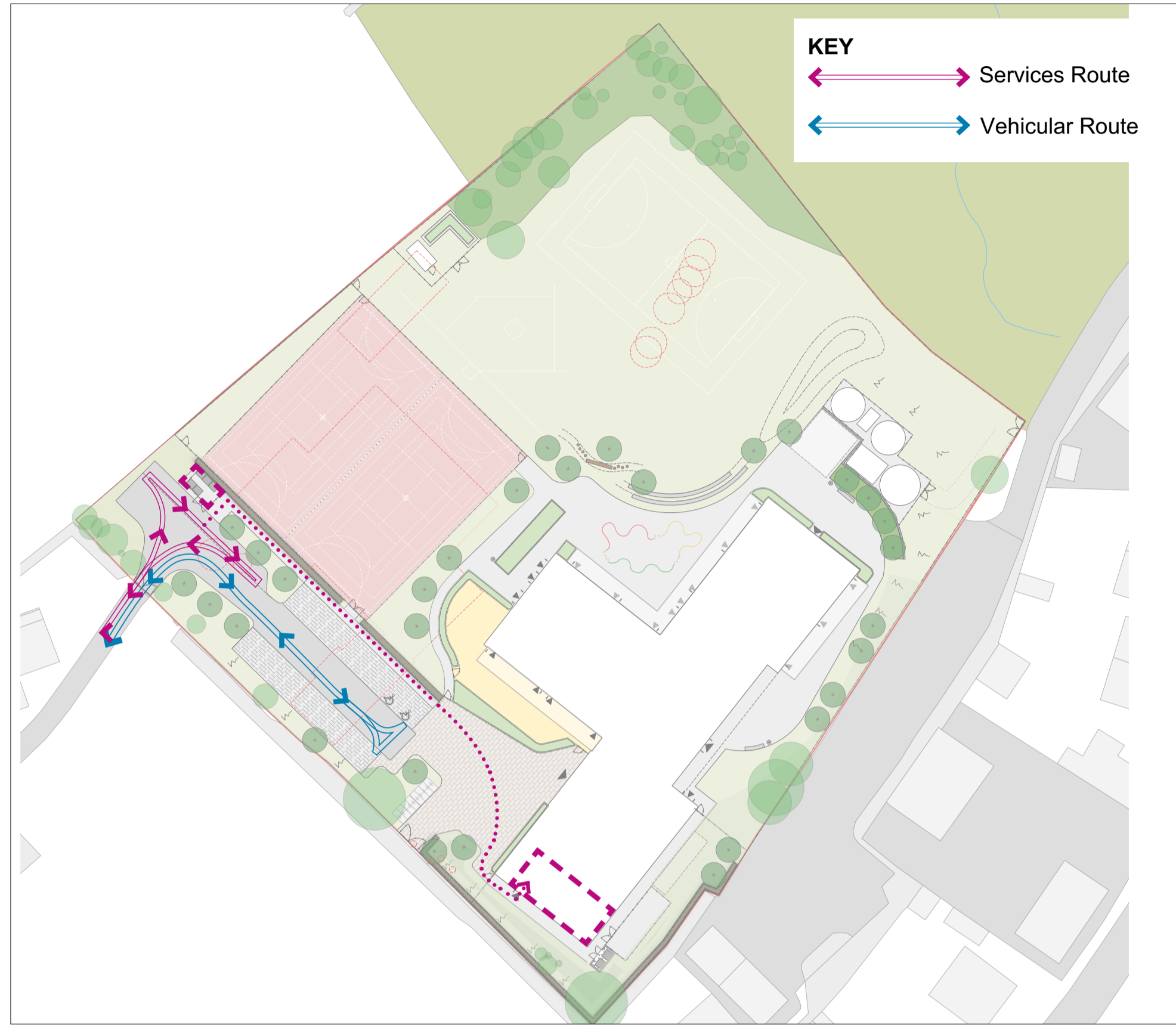


Notes
 1. Do not scale from this drawing
 2. To be read in conjunction with Project Risk Register REF: XXX
 3. To be read in conjunction with all other Landscape Architect's drawings

KEY



PEDESTRIAN AND CYCLIST CIRCULATION



VEHICULAR AND SERVICES CIRCULATION



FIRE TENDER CIRCULATION AND ACCESSIBLE FACADE

ID	RISK	MITIGATION	DATE MITIGATED
RESIDUAL PROJECT RISKS			

DATE	REV	DESCRIPTION OF REVISION	DRAWN BY	APPROVED BY
19/10/2021	P04	Amended following comments	MDS	
04/10/2021	P03	Issued for Planning	MDS	BH
29/09/2021	P02	Issued for stage 3	MDS	BH

REVISIONS

STATUS
S2 - FOR PLANNING

ares LANDSCAPE ARCHITECTS
 Ares Landscape Architects LTD
 Gatecrasher,
 51 Eyre Lane
 Sheffield
 S1 4RB
 t: 0114 276 2000
 e: hello@aresdesign.co.uk
 w: ares.eu.com

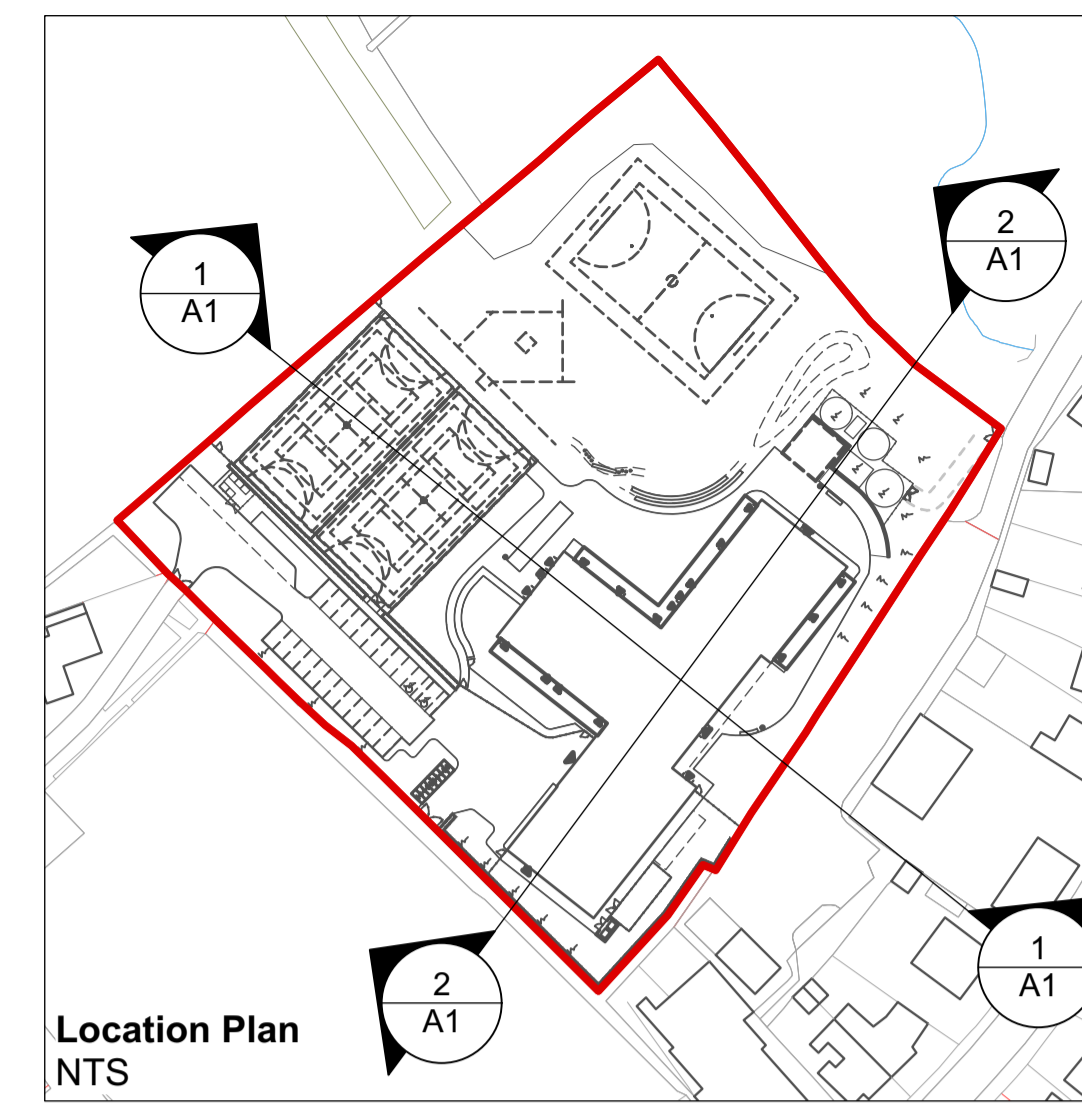
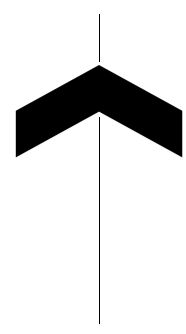
CLIENT:
Sheppard Robson Architects

PROJECT TITLE:
Llanilltud Faerdref Primary School

DRAWING TITLE:
Access and Circulation

DRAWING SCALE:	DRAWN BY:	DRAWN DATE:
NTS	MDS	25/05/2021
PAPER SIZE:	APPROVED BY:	ALA PROJECT CODE:
A1	LS	ALA679

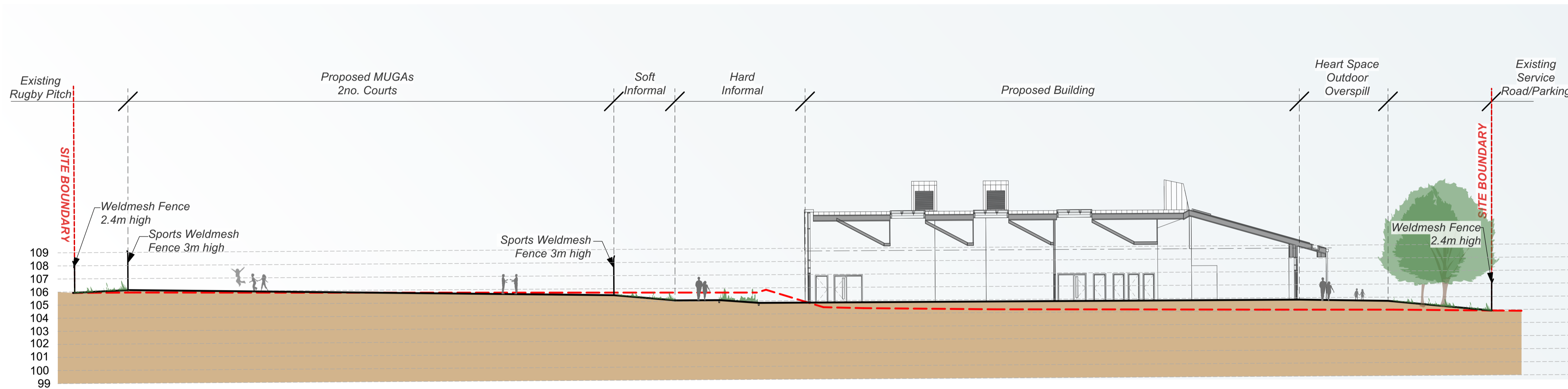
DRAWING NUMBER: **RH0301-ALA-00-XX-DR-L-00008 S2** STATUS: **S2** REVISION: **P04**



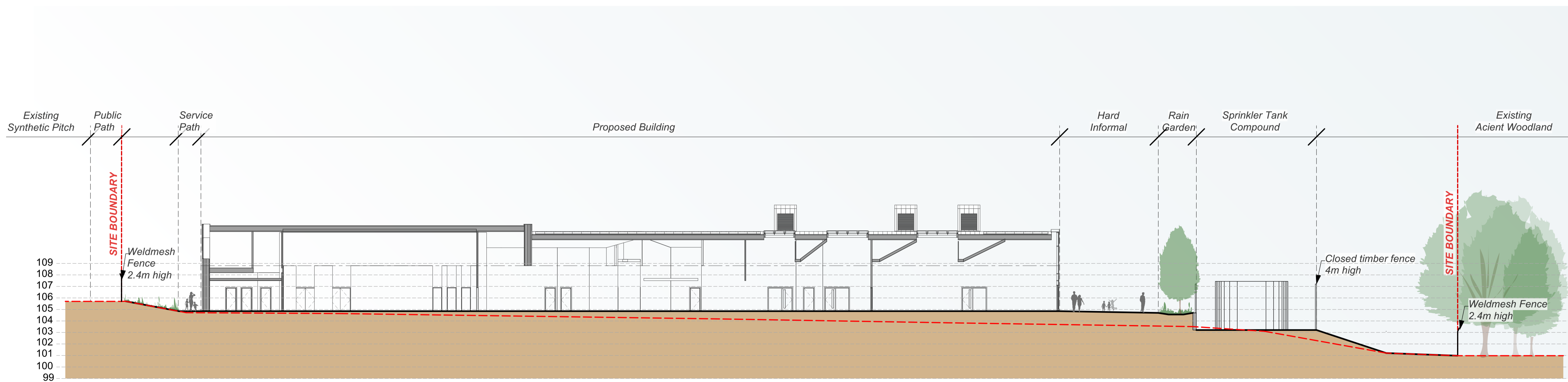
Notes
 1. Do not scale from this drawing
 2. To be read in conjunction with Project Risk Register REF: XXX
 3. To be read in conjunction with all other Landscape Architect's drawings

KEY

--- Existing Ground Level
 — Proposed Ground Level



1 Section 1-1
 Scale: 1:200



2 Section 2-2
 Scale: 1:200

ID	RISK	MITIGATION	DATE MITIGATED
RESIDUAL PROJECT RISKS			

DATE	REV	DESCRIPTION OF REVISION	DRAWN BY	APPROVED BY
04/10/2021	P01	Issued for stage 3	MDS	BH

REVISIONS

STATUS
S3 - RIBA Stage 3

ares LANDSCAPE ARCHITECTS
 Ares Landscape Architects LTD
 Gatecrasher,
 51 Eyre Lane
 Sheffield
 S1 4RB
 t: 0114 276 2000
 e: hello@aresdesign.co.uk
 w: ares.eu.com

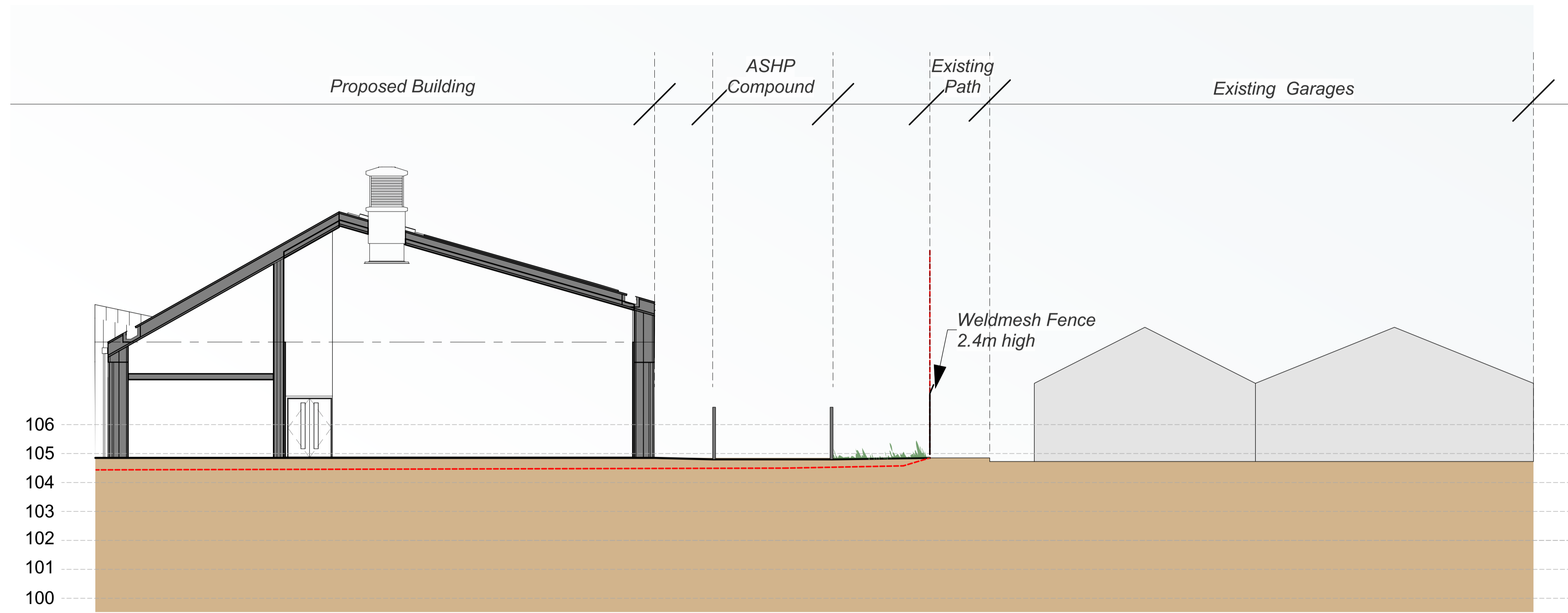
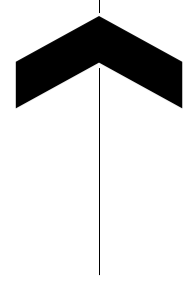
CLIENT:
Sheppard Robson Architects

PROJECT TITLE:
Llanilltud Faerdref Primary School

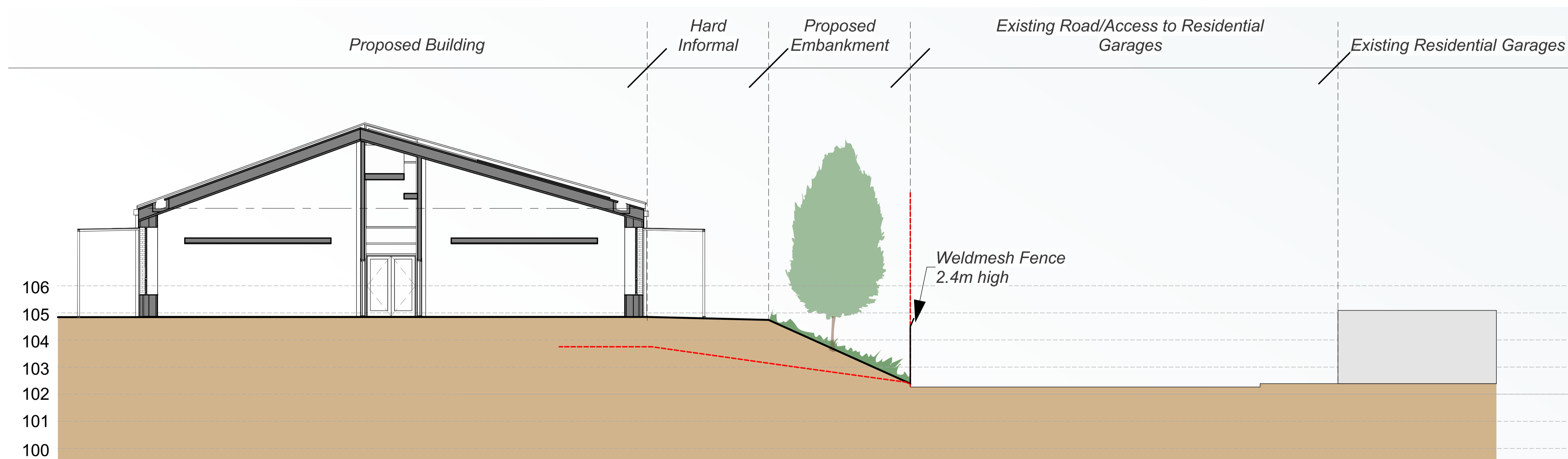
DRAWING TITLE:
Site Sections 1 of 2

DRAWING SCALE:	DRAWN BY:	DRAWN DATE:
NTS	MDS	28/09/2021
PAPER SIZE:	APPROVED BY:	ALA PROJECT CODE:
A1	LS	ALA679

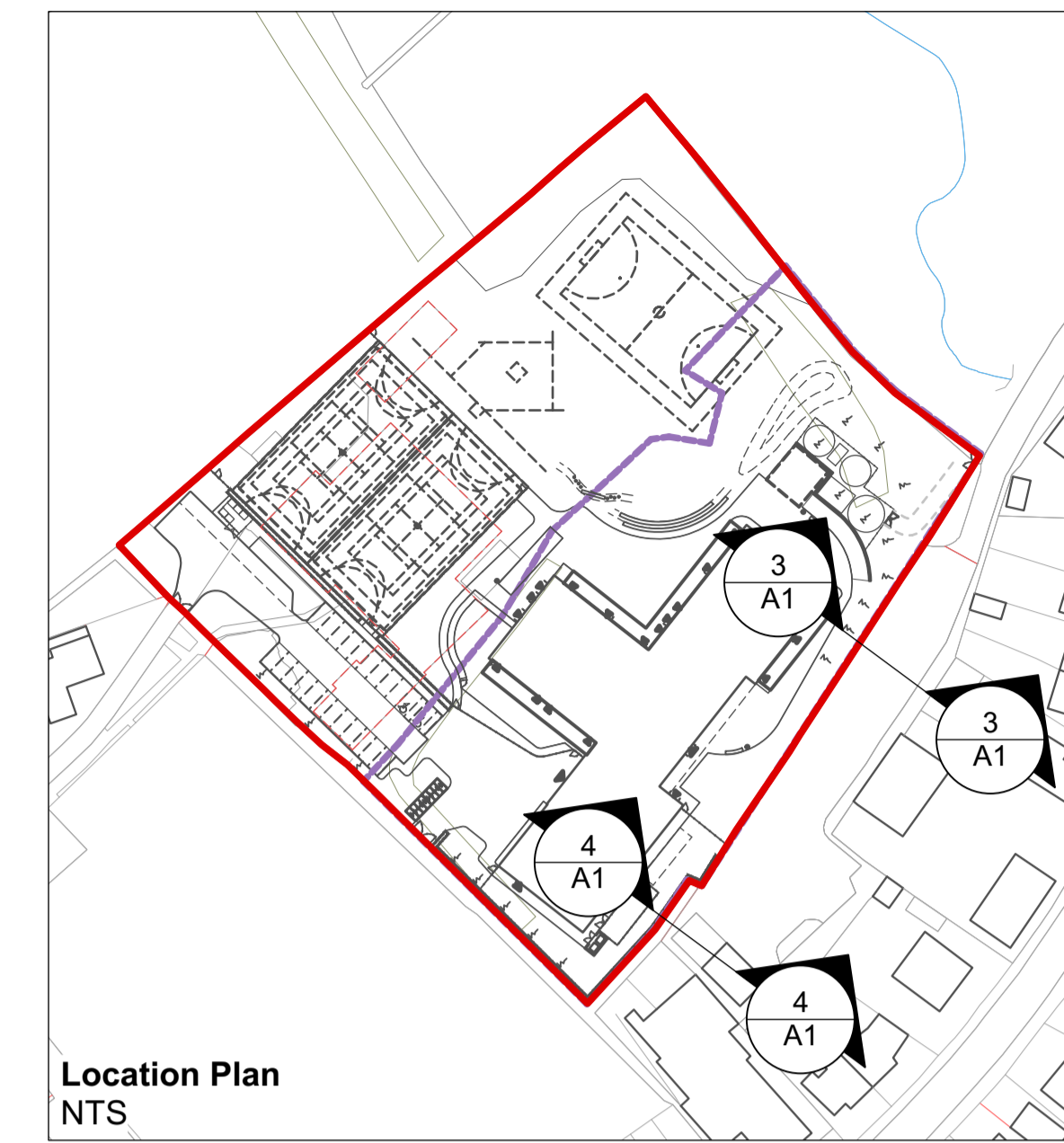
DRAWING NUMBER: **RH0301-ALA-00-XX-DR-L-00015 S3** STATUS: **P01** REVISION:



1 Section 3-3
Scale: 1:200



2 Section 4-4
Scale: 1:200



Notes
 1. Do not scale from this drawing
 2. To be read in conjunction with Project Risk Register REF: XXX
 3. To be read in conjunction with all other Landscape Architect's drawings

KEY

--- Existing Ground Level
 — Proposed Ground Level

ID	RISK	MITIGATION	DATE MITIGATED
RESIDUAL PROJECT RISKS			

DATE	REV	DESCRIPTION OF REVISION	DRAWN BY	APPROVED BY
REVISIONS				

STATUS
S2 - FOR PLANNING

ares LANDSCAPE ARCHITECTS
 Ares Landscape Architects LTD
 Gatecrasher,
 51 Eyre Lane
 Sheffield
 S1 4RB
 t: 0114 276 2000
 e: hello@aresdesign.co.uk
 w: ares.eu.com

CLIENT:
Sheppard Robson Architects

PROJECT TITLE:
Llanilltud Faerdref Primary School

DRAWING TITLE:
Site Sections 2 of 2

DRAWING SCALE: NTS	DRAWN BY: MDS	DRAWN DATE: 28/09/2021
PAPER SIZE: A1	APPROVED BY: LS	ALA PROJECT CODE: ALA679

DRAWING NUMBER: **RH0301-ALA-00-XX-DR-L-00016 S2** STATUS: **S2** REVISION: **P01**



ares
LANDSCAPE ARCHITECTS

Ares Landscape Architects
Sheffield | London | Cheltenham
51 Eyre Lane, Sheffield, S1 4RB
0114 276 2000

STATUS
S2 RIBA STAGE 3

CLIENT
SHEPPARD ROBSON ARCHITECTS

PROJECT TITLE
LLANILLTUD FAERDREF PRIMARY SCHOOL

DRAWING TITLE
LANDSCAPE VISUALISATIONS

DRAWING NUMBER	STATUS	REVISION
RH0301-ALA-00-XX-DR-L-00020	S2	P01