



Notes
 1. Do not scale from this drawing
 2. To be read in conjunction with Project Risk Register REF: XXX
 3. To be read in conjunction with all other Landscape Architect's drawings

- KEY**
- (A) Staff and Visitor Car Park
Accessible spaces - 2
Parking spaces - 26
 - (B) Entrance Plaza
 - (C) Cycle Shelters
Cycle stand number to be increased subject to further coordination with Transport Assessment
 - (D) MUGA
2no courts
 - (E) Orchard
Proposed by the School
 - (F) Playing Fields
 - (G) Nursery and Reception
Outdoor Play Area
 - (H) KS1
Outdoor Play Area
 - (I) KS2
Outdoor Play Area, including:
Outdoor canopy and amphitheatre
 - (J) M&E Services
 - (K) Bin Store
 - (L) Sprinkler Tanks Area
 - (M) Existing Woodland Area
Retained
 - (N) Potential Trim Trail
 - (O) Dry Attenuation

ID	RISK	MITIGATION	DATE MITIGATED
RESIDUAL PROJECT RISKS			

DATE	REV	DESCRIPTION OF REVISION	DRAWN BY	APPROVED BY
14/10/2021	P06	Note added on cycle stands	MDS	BH
04/10/2021	P05	Issued for Planning	HS	BH
04/10/2021	P04	Issued for Stage 3	HS	BH

REVISIONS

STATUS
S2 - FOR PLANNING

ares LANDSCAPE ARCHITECTS
 Ares Landscape Architects LTD
 Gatecrasher,
 51 Eyre Lane
 Sheffield
 S1 4RB
 t: 0114 276 2000
 e: hello@aresdesign.co.uk
 w: ares.eu.com

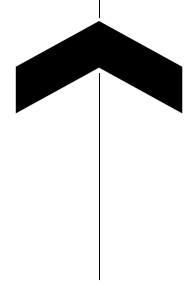
CLIENT:
Sheppard Robson Architects

PROJECT TITLE:
Penygawsi Primary School

DRAWING TITLE:
Landscape Masterplan

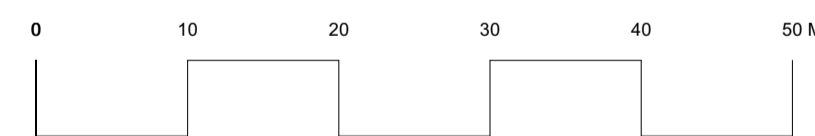
DRAWING SCALE: 1:500	DRAWN BY: MDS	DRAWN DATE: 25/05/2021
PAPER SIZE: A1	APPROVED BY: LS	ALA PROJECT CODE: ALA679

DRAWING NUMBER: **RH0401-ALA-00-XX-DR-L-00005 S2** STATUS: **S2** REVISION: **P06**



Existing Woodland to be retained

Orchard trees, future school project to be installed and maintained by the school.



Notes

1. Do not scale from this drawing
2. To be read in conjunction with Project Risk Register REF: XXX
3. To be read in conjunction with all other Landscape Architect's drawings

KEY

- Existing Tree
To be retained
- Tree Planting
To include native species as RCT tree policy
Single species not to exceed 10% as climate change resilience measure.
Trees in rain gardens to have tolerance of drought and waterlogging periods.
- Amenity Grass
Mowned regularly to allow activities and play opportunities
- Biodiverse Grass
Grass areas to include bulbs; to be sown at less rate to allow natural regeneration of native seedbank; to be mowned less regularly
- Rain Gardens
Planting species capable to tolerate drought + waterlogging periods. Species selection as RCT policies and feedback
- Hedge Planting
To include native and more than one species

ID	RISK	MITIGATION	DATE MITIGATED
RESIDUAL PROJECT RISKS			

DATE	REV	DESCRIPTION OF REVISION	DRAWN BY	APPROVED BY
19/10/2021	P02	Amended following comments	LS	BH
04/10/2021	P01	Issued for Planning	HS	BH

REVISIONS

STATUS
S2 - FOR PLANNING

Ares Landscape Architects LTD
Gatecrasher,
51 Eyre Lane
Sheffield
S1 4RB
t: 0114 276 2000
e: hello@aresdesign.co.uk
w: ares.eu.com

CLIENT:
Sheppard Robson Architects

PROJECT TITLE:
Penygawsi Primary School

DRAWING TITLE:
Planting Strategy

DRAWING SCALE:	DRAWN BY:	DRAWN DATE:
1:500	MDS	04/08/2021
PAPER SIZE:	APPROVED BY:	ALA PROJECT CODE:
A1	LS	ALA679

DRAWING NUMBER: **RH0401-ALA-00-XX-DR-L-00013 S2** STATUS: **S2** REVISION: **P02**



Notes
 1. Do not scale from this drawing
 2. To be read in conjunction with Project Risk Register REF: XXX
 3. To be read in conjunction with all other Landscape Architect's drawings

KEY

ID	RISK	MITIGATION	DATE MITIGATED
RESIDUAL PROJECT RISKS			

DATE	REV	DESCRIPTION OF REVISION	DRAWN BY	APPROVED BY
04/10/2021	P02	Issued for planning	HS	BH
REVISIONS				

STATUS
S2 - FOR PLANNING

ares LANDSCAPE ARCHITECTS
 Ares Landscape Architects LTD
 Gatecrasher,
 51 Eyre Lane
 Sheffield
 S1 4RB
 t: 0114 276 2000
 e: hello@aresdesign.co.uk
 w: ares.eu.com

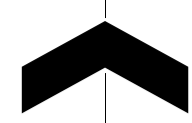
CLIENT:
Sheppard Robson Architects

PROJECT TITLE:
Penygawsi Primary School

DRAWING TITLE:
Outline Levels

DRAWING SCALE: 1:500
 PAPER SIZE: A1
 DRAWN BY: HS
 APPROVED BY: LS
 DRAWN DATE: 04/08/2021
 ALA PROJECT CODE: ALA679

DRAWING NUMBER: RH0401-ALA-00-XX-DR-L-00014 S2
 STATUS: P02
 REVISION:



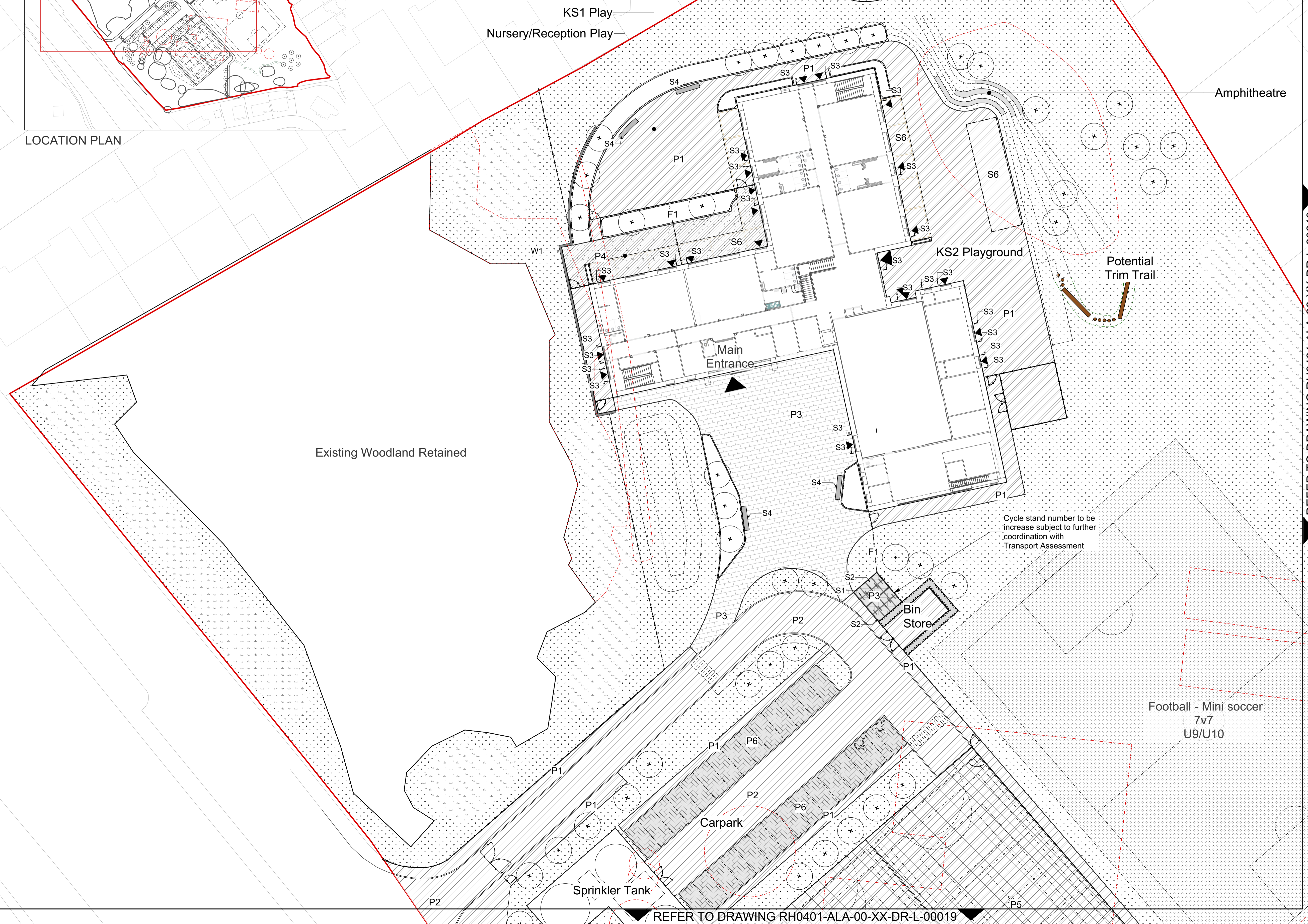
LOCATION PLAN

- Notes**
1. Do not scale from this drawing
 2. To be read in conjunction with Project Risk Register REF: XXX
 3. To be read in conjunction with all other Landscape Architect's drawings

KEY

- Site**
- Site Boundary
 - Proposed Building
 - Existing Building to be demolished
 - Existing Tree
 - Existing Tree to be removed
- Planting**
- Proposed Tree Refer to Planting Strategy
 - Grass Seed Refer to Planting Strategy
 - Grass Turf Lawn Refer to Planting Strategy
 - Amenity Planting Refer to Planting Strategy
 - Hedge Planting Refer to Planting Strategy
 - Biodiverse Grass Planting Refer to Planting Strategy
- Paving**
- Pedestrian Macadam To Engineer's Specification
 - Vehicular Macadam To Engineer's Specification
 - Concrete Block Paving Specification TBC
 - Webour Surface Specification TBC
 - MUGA Permeable Surface Specification TBC
 - Permeable Block Paving Specification TBC
- Furniture**
- S1 Cycle Stands Specification TBC
 - S2 Cycle Shelter Specification TBC
 - S3 Door Protection Barrier 100x400mm Specification TBC
 - S4 Seating Bench 500 x 200mm Specification TBC
 - S5 Litter Bin Specification TBC
- Fencing and Structures**
- Proposed Fencing Refer to Fencing and Security Strategy for details
 - Proposed Gates Refer to Fencing and Security Strategy for details
 - W1 Retaining Wall Specification TBC
 - S6 Canopy / Building Overhang

REFER TO DRAWING RH0401-ALA-00-XX-DR-L-00019



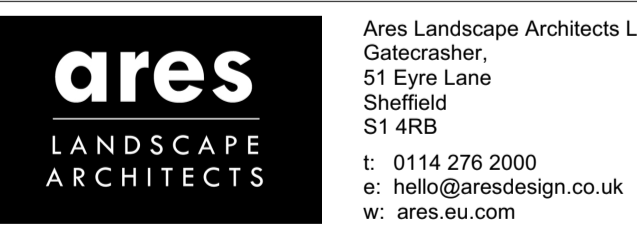
Cycle stand number to be increase subject to further coordination with Transport Assessment

ID	RISK	MITIGATION	DATE MITIGATED
RESIDUAL PROJECT RISKS			

DATE	REV	DESCRIPTION OF REVISION	DRAWN BY	APPROVED BY
14/10/2021	P03	Note added to cycle stand	MDS	BH
04/10/2021	P02	Issued for Planning	HS	BH

REVISIONS

STATUS
S2 - FOR PLANNING



CLIENT:
Sheppard Robson Architects

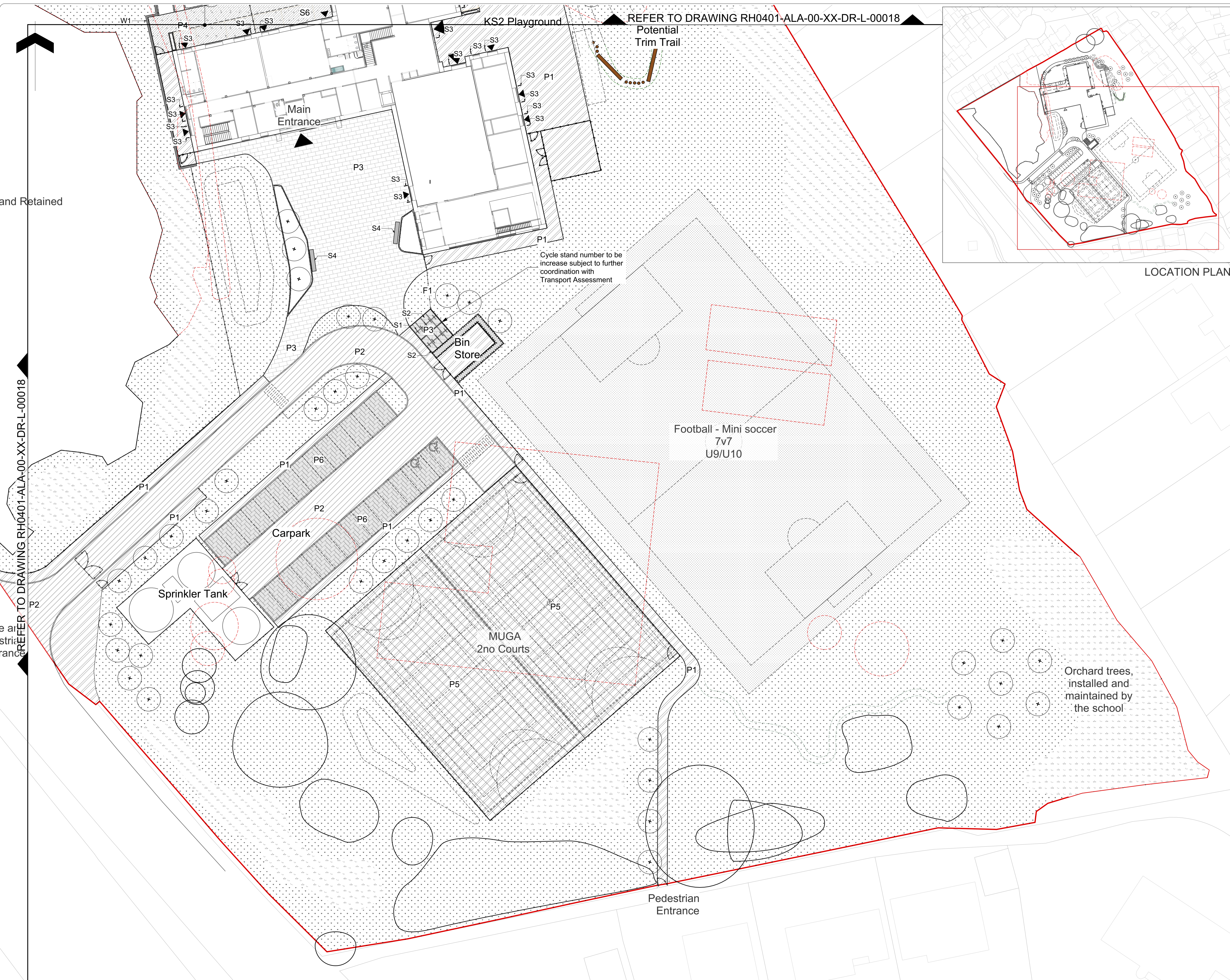
PROJECT TITLE:
Penygawsi Primary School

DRAWING TITLE:
Detailed Hard and Soft Landscape General Arrangement 1 of 2

DRAWING SCALE: 1:250	DRAWN BY: MDS	DRAWN DATE: 28/09/2021
PAPER SIZE: A1	APPROVED BY: LS	ALA PROJECT CODE: ALA679

DRAWING NUMBER: **RH0401-ALA-00-XX-DR-L-00018 S2** STATUS: **REVISION: P03**

REFER TO DRAWING RH0401-ALA-00-XX-DR-L-00019

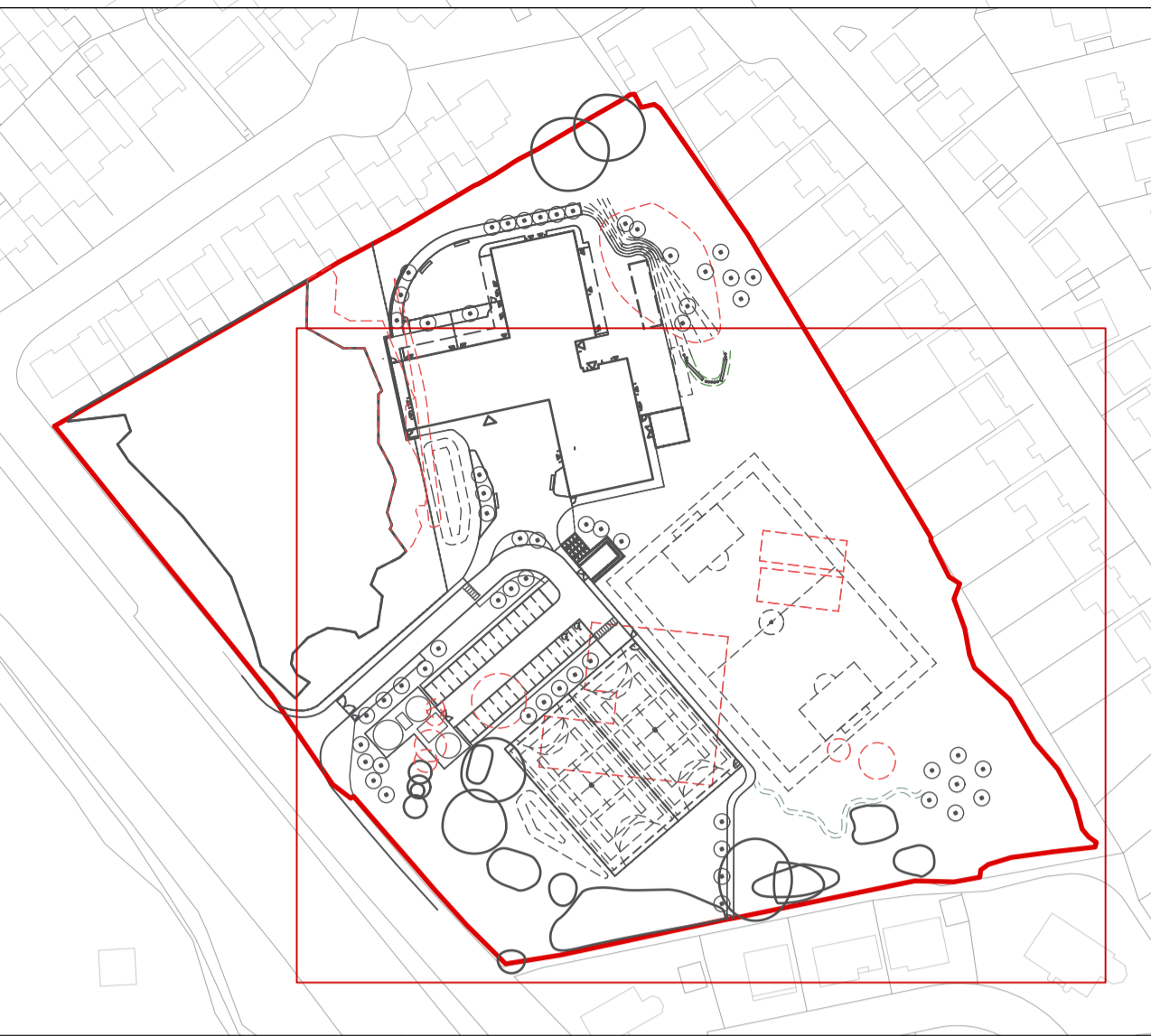


REFER TO DRAWING RH0401-ALA-00-XX-DR-L-00018

REFER TO DRAWING RH0401-ALA-00-XX-DR-L-00018

- Notes**
1. Do not scale from this drawing
 2. To be read in conjunction with Project Risk Register REF: XXX
 3. To be read in conjunction with all other Landscape Architect's drawings

- KEY**
- Site**
 - Site Boundary
 - Proposed Building
 - Existing Building to be demolished
 - Existing Tree
 - Existing Tree to be removed
 - Planting**
 - Proposed Tree Refer to Planting Strategy
 - Grass Seed Refer to Planting Strategy
 - Grass Turf Lawn Refer to Planting Strategy
 - Arboretum Planting Refer to Planting Strategy
 - Hedge Planting Refer to Planting Strategy
 - Biodiverse Grass Planting Refer to Planting Strategy
 - Paving**
 - Pedestrian Macadam To Engineer's Specification
 - Vehicular Macadam To Engineer's Specification
 - Concrete Block Paving Specification TBC
 - Wetpour Surface Specification TBC
 - MUGA Permeable Surface Specification TBC
 - Permeable Block Paving Specification TBC
 - Furniture**
 - S1 Cycle Stands Specification TBC
 - S2 Cycle Shelter Specification TBC
 - S3 Door Protection Barrier 100x40mm Specification TBC
 - S4 Seating Bench 500 x 200mm Specification TBC
 - S5 Litter Bin Specification TBC
 - Fencing and Structures**
 - Proposed Fencing Refer to Fencing and Security Strategy for details
 - Proposed Gates Refer to Fencing and Security Strategy for details
 - W1 Retaining Wall Specification TBC
 - S6 Canopy / Building Overhang



LOCATION PLAN

Cycle stand number to be increase subject to further coordination with Transport Assessment

Orchard trees, installed and maintained by the school

ID	RISK	MITIGATION	DATE	MITIGATED
RESIDUAL PROJECT RISKS				

DATE	REV	DESCRIPTION OF REVISION	DRAWN BY	APPROVED BY
14/10/2021	P03	Note added to cycle stand	MDS	BH
04/10/2021	P02	Issued for Planning	HS	BH

REVISIONS

STATUS
S2 - FOR PLANNING

ares LANDSCAPE ARCHITECTS

Ares Landscape Architects LTD
Galecrasher,
51 Eyre Lane
Sheffield
S1 4RB
t: 0114 276 2000
e: hello@aresdesign.co.uk
w: ares.eu.com

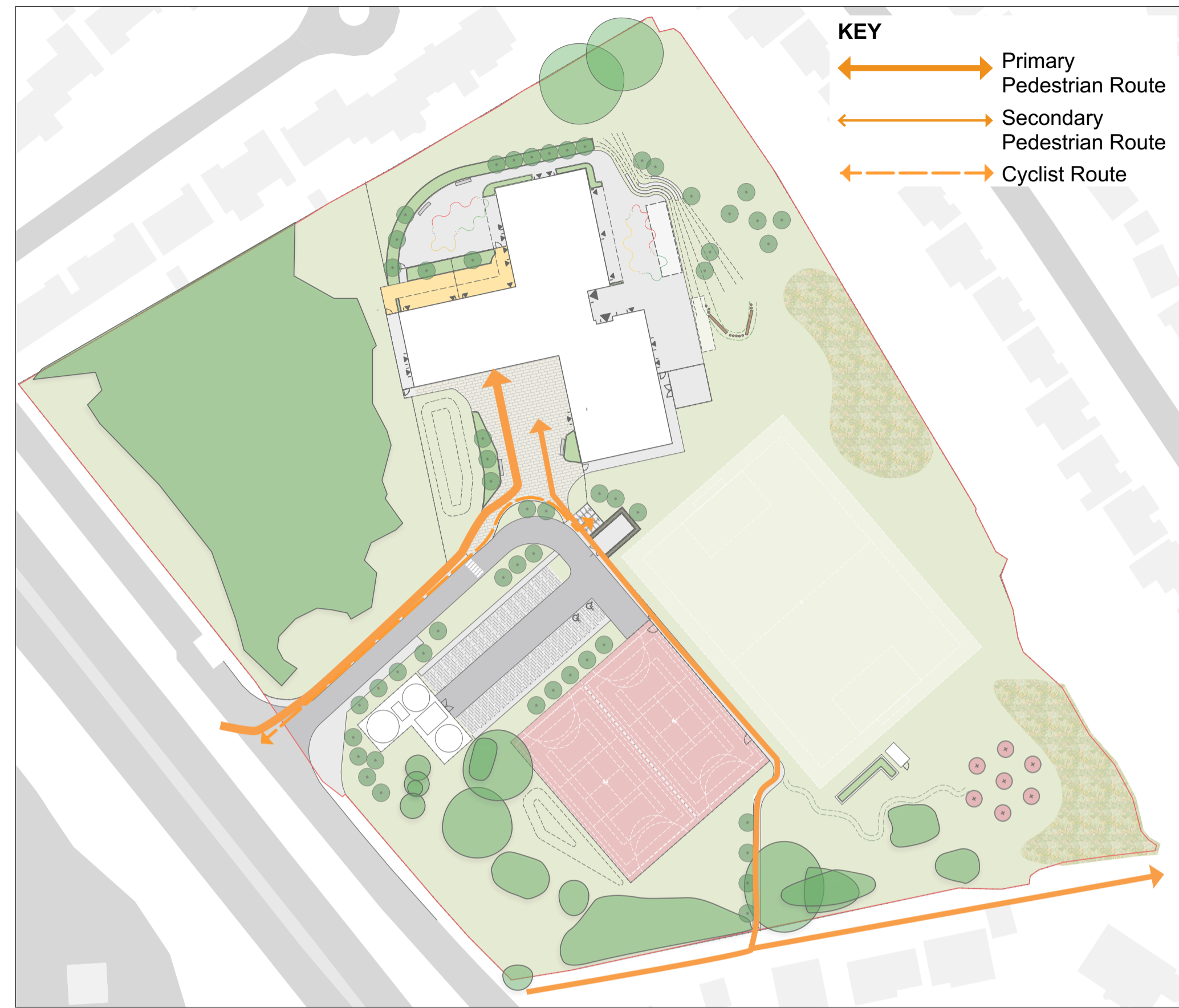
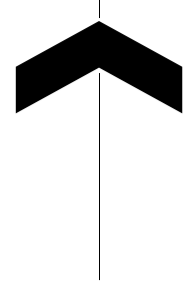
CLIENT:
Sheppard Robson Architects

PROJECT TITLE:
Penygawsi Primary School

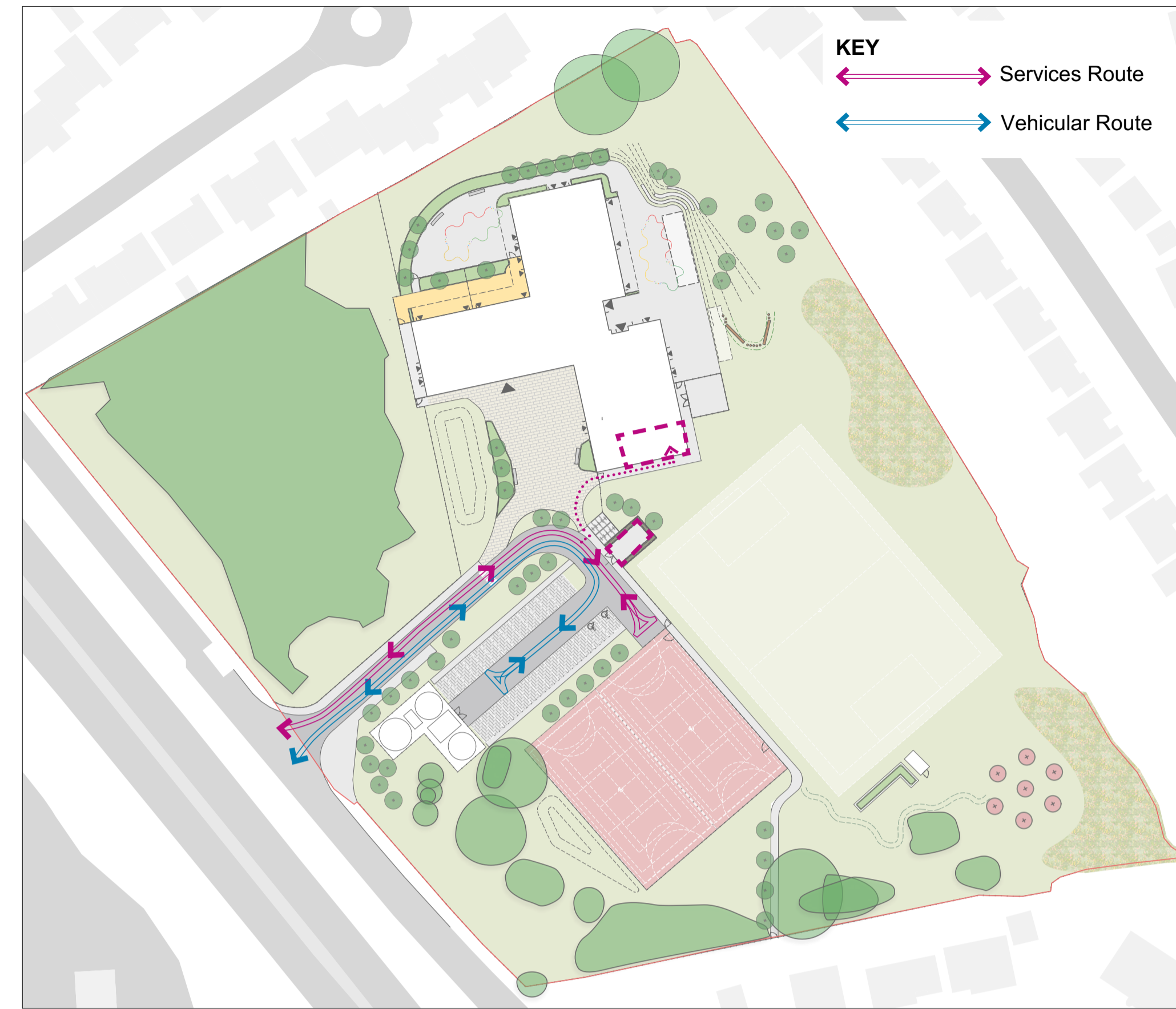
DRAWING TITLE:
Detailed Hard and Soft Landscape General Arrangement 2 of 2

DRAWING SCALE: 1:250
DRAWN BY: MDS
PAPER SIZE: A1
APPROVED BY: LS
DRAWN DATE: 28/09/2021
ALA PROJECT CODE: ALA679

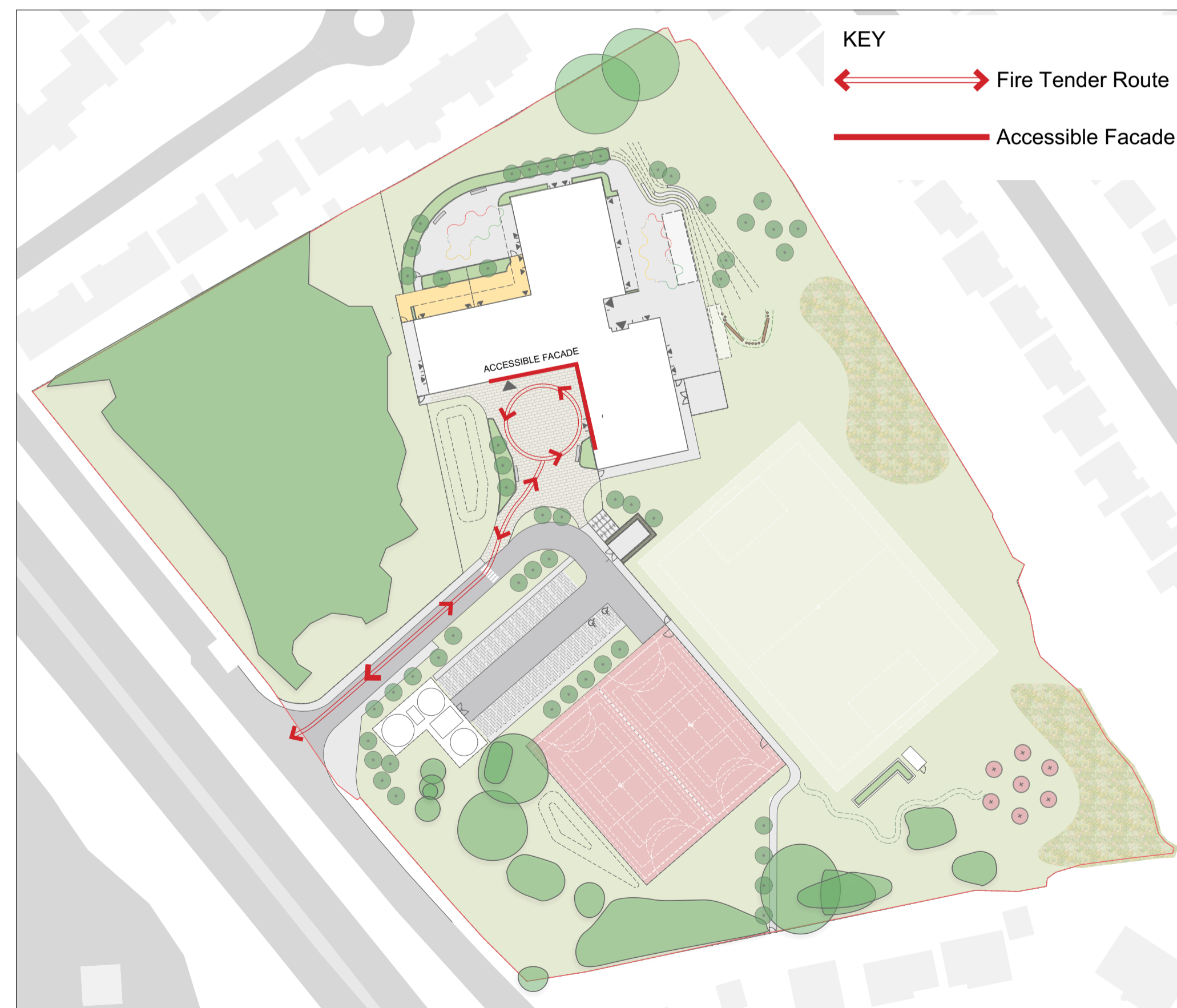
DRAWING NUMBER: **RH0401-ALA-00-XX-DR-L-00019 S2**
STATUS: **FOR PLANNING**
REVISION: **P03**



PEDESTRIAN AND CYCLE CIRCULATION



VEHICULAR AND SERVICES CIRCULATION



FIRE TENDER CIRCULATION AND ACCESSIBLE FACADE

Notes
 1. Do not scale from this drawing
 2. To be read in conjunction with Project Risk Register REF: XXX
 3. To be read in conjunction with all other Landscape Architect's drawings

KEY

ID	RISK	MITIGATION	DATE MITIGATED
RESIDUAL PROJECT RISKS			

DATE	REV	DESCRIPTION OF REVISION	DRAWN BY	APPROVED BY
19/10/2021	P04	Amended following comments	MDS	BH
04/10/2021	P03	Issued for Planning	MDS	BH
29/09/2021	P02	Issued for RIBA stage 3	MDS	BH

REVISIONS

STATUS
S2 - FOR PLANNING

ares LANDSCAPE ARCHITECTS
 Ares Landscape Architects LTD
 Gatecrasher,
 51 Eyre Lane
 Sheffield
 S1 4RB
 t: 0114 276 2000
 e: hello@aresdesign.co.uk
 w: ares.eu.com

CLIENT:
Sheppard Robson Architects

PROJECT TITLE:
Penygawsi Primary School

DRAWING TITLE:
Access and Circulation

DRAWING SCALE: NTS
 PAPER SIZE: A1
 DRAWN BY: MDS
 APPROVED BY: LS
 DRAWN DATE: 25/05/2021
 ALA PROJECT CODE: ALA679

DRAWING NUMBER: **RH0401-ALA-00-XX-DR-L-00008 S2**
 STATUS: **S2**
 REVISION: **P04**



ares
LANDSCAPE
ARCHITECTS

Ares Landscape Architects
Sheffield | London | Cheltenham

51 Eyre Lane, Sheffield, S1 4RB

0114 276 2000

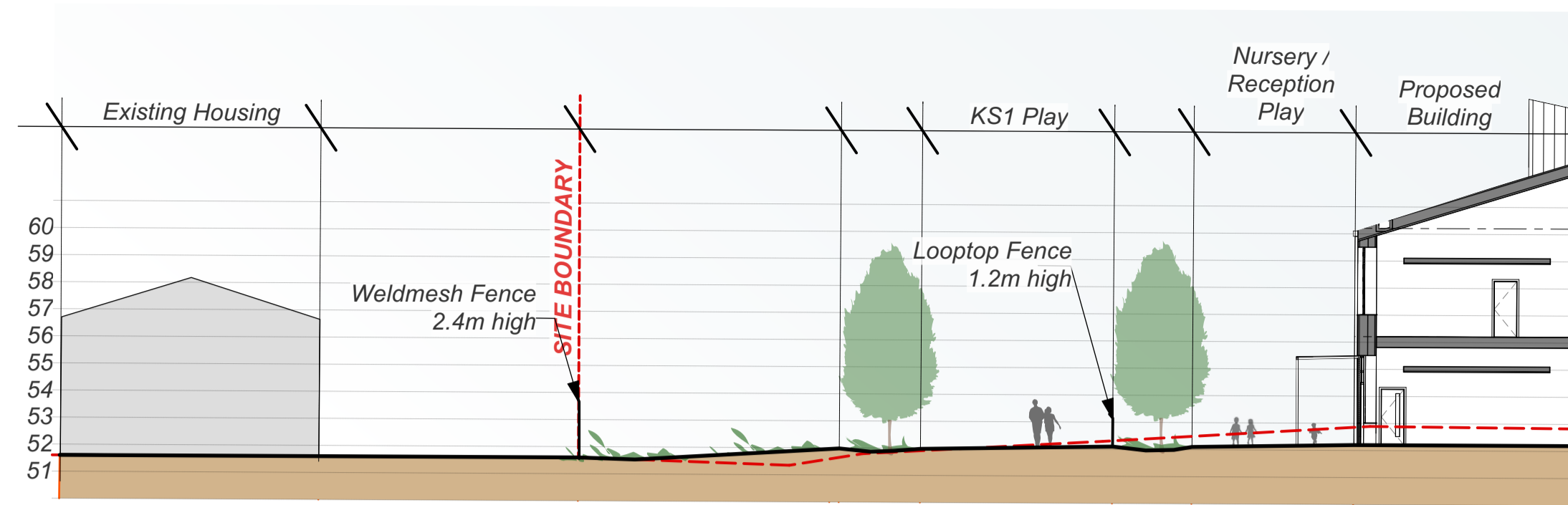
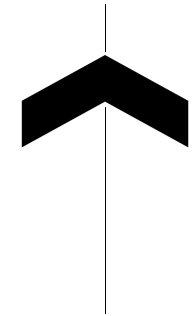
STATUS
S2 PLANNING

CLIENT
SHEPPARD ROBSON ARCHITECTS

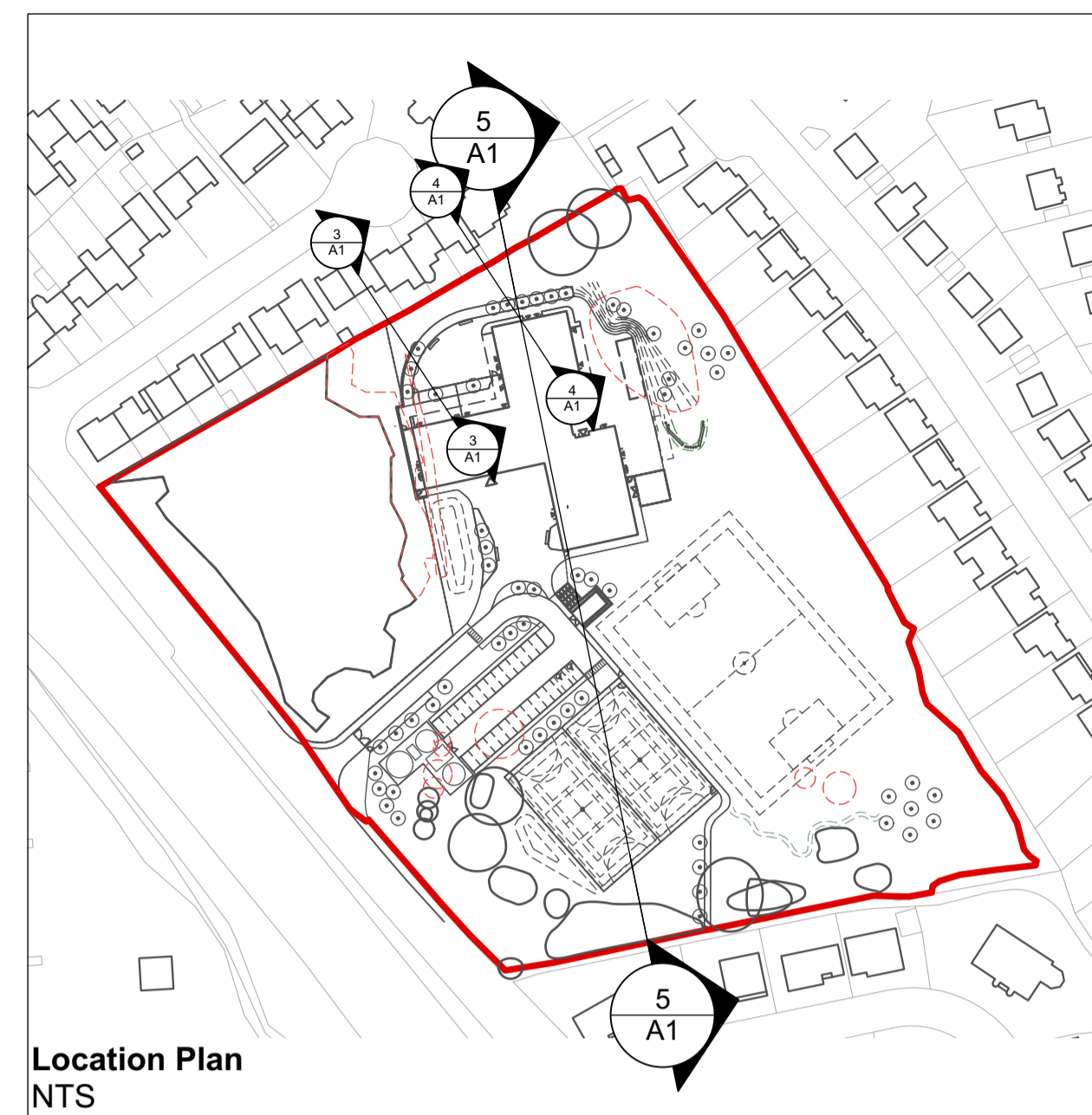
PROJECT TITLE
PENYGAWSI PRIMARY SCHOOL

DRAWING TITLE
LANDSCAPE VISUALISATIONS

DRAWING NUMBER	STATUS	REVISION
RH0401-ALA-00-XX-DR-L-00020	S2	P01

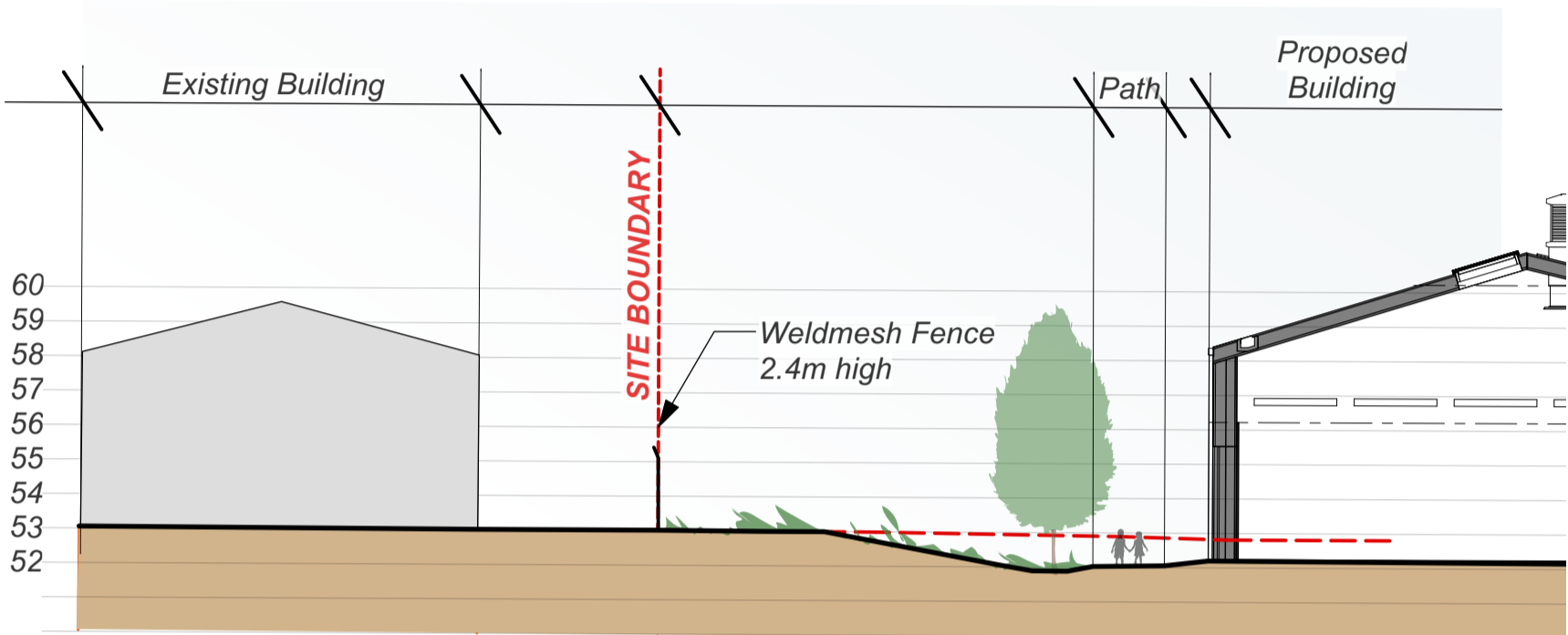


1 Section 3-3
Scale: 1:100

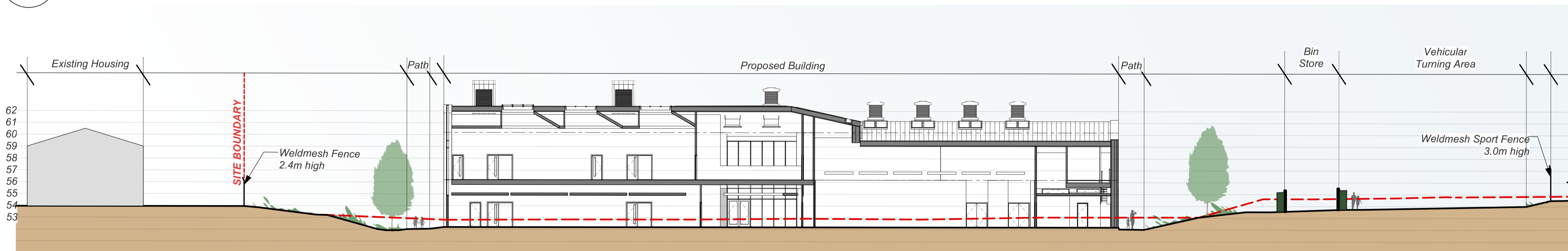


Notes
 1. Do not scale from this drawing
 2. To be read in conjunction with Project Risk Register REF: XXX
 3. To be read in conjunction with all other Landscape Architect's drawings

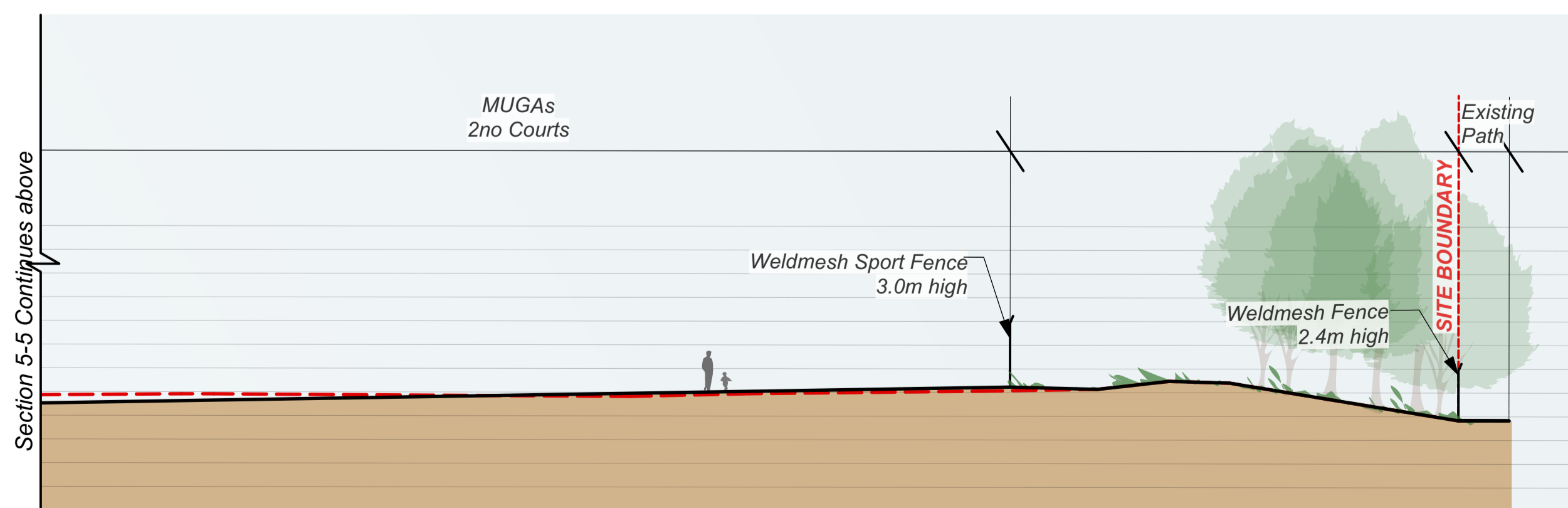
KEY
 - - - Existing Ground Level
 — Proposed Ground Level



2 Section 4-4
Scale: 1:200



3 Section 5-5
Scale: 1:200



4 Section 5-5
Scale: 1:200

Section 5-5 Continues below

ID	RISK	MITIGATION	DATE MITIGATED
RESIDUAL PROJECT RISKS			

DATE	REV	DESCRIPTION OF REVISION	DRAWN BY	APPROVED BY
19/10/2021	P02	Key added	LS	

REVISIONS

STATUS
S2 - FOR PLANNING

ares LANDSCAPE ARCHITECTS
 Ares Landscape Architects LTD
 Gatecrasher,
 51 Eyre Lane
 Sheffield
 S1 4RB
 t: 0114 276 2000
 e: hello@aresdesign.co.uk
 w: ares.eu.com

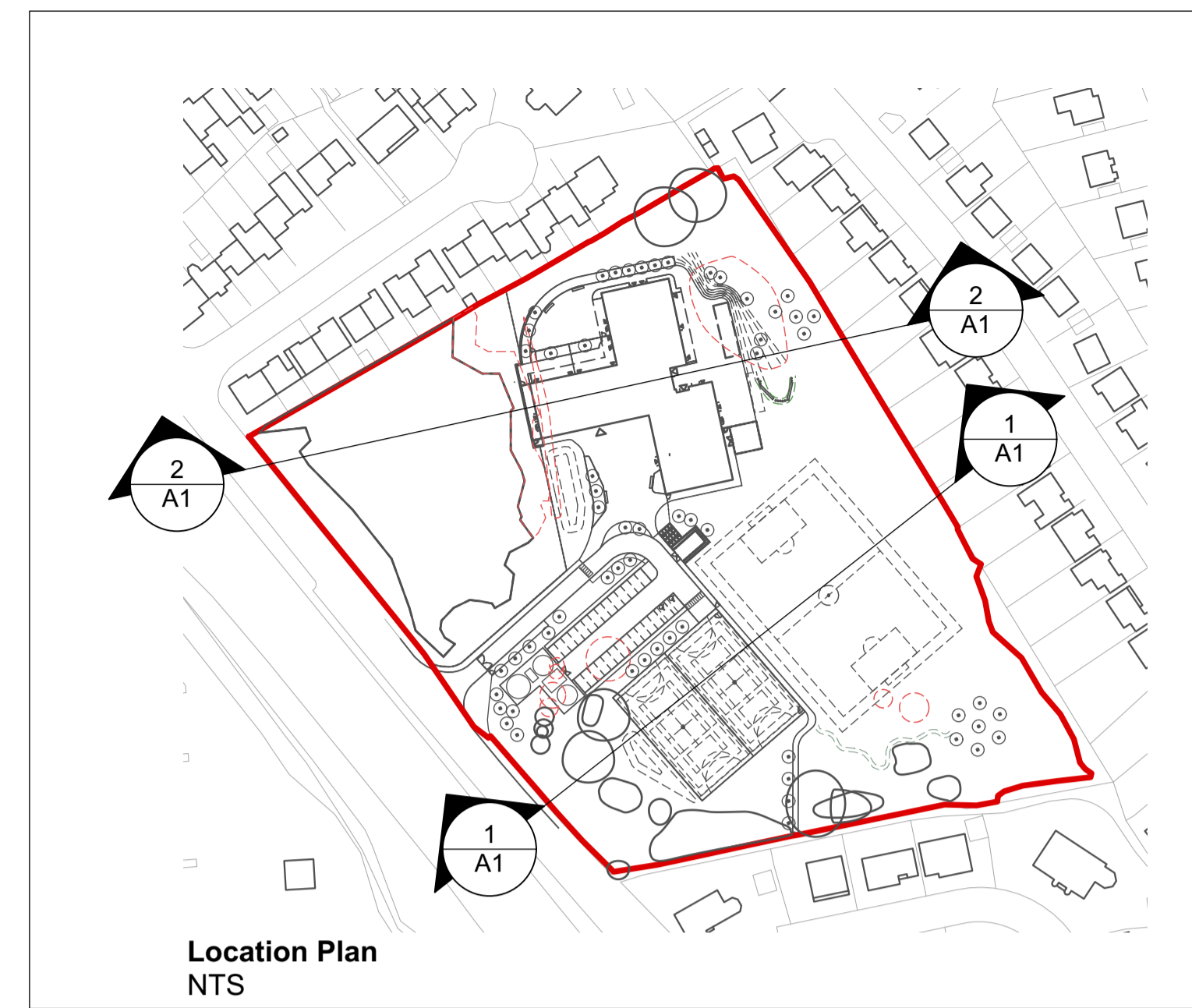
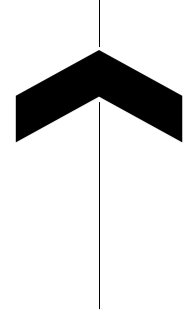
CLIENT:
Sheppard Robson Architects

PROJECT TITLE:
Penygawsi Primary School

DRAWING TITLE:
Site Sections 2 of 2

DRAWING SCALE: NTS	DRAWN BY: MDS	DRAWN DATE: 04/08/2021
PAPER SIZE: A1	APPROVED BY: LS	ALA PROJECT CODE: ALA679

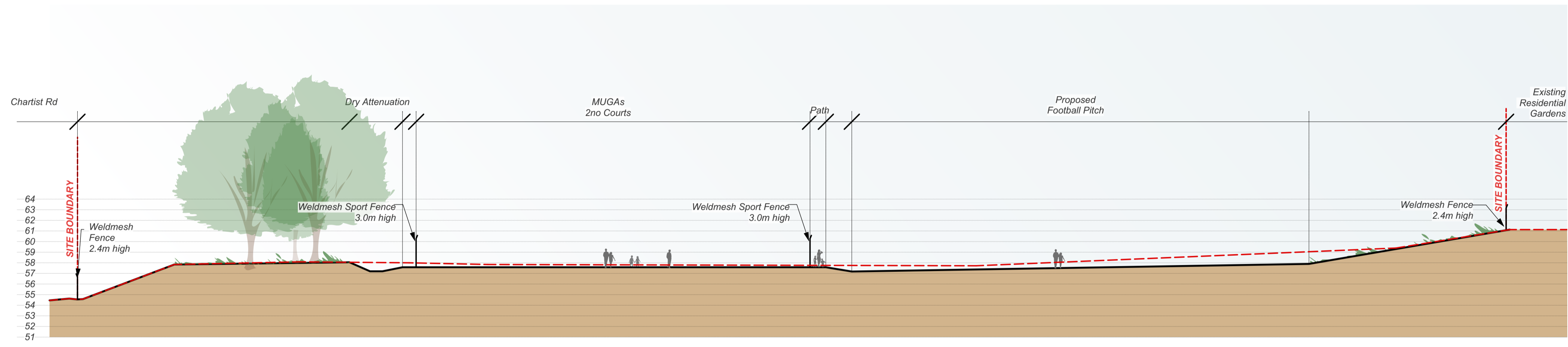
DRAWING NUMBER: **RH0401-ALA-00-XX-DR-L-00016 S2** STATUS: **FOR PLANNING** REVISION: **P02**



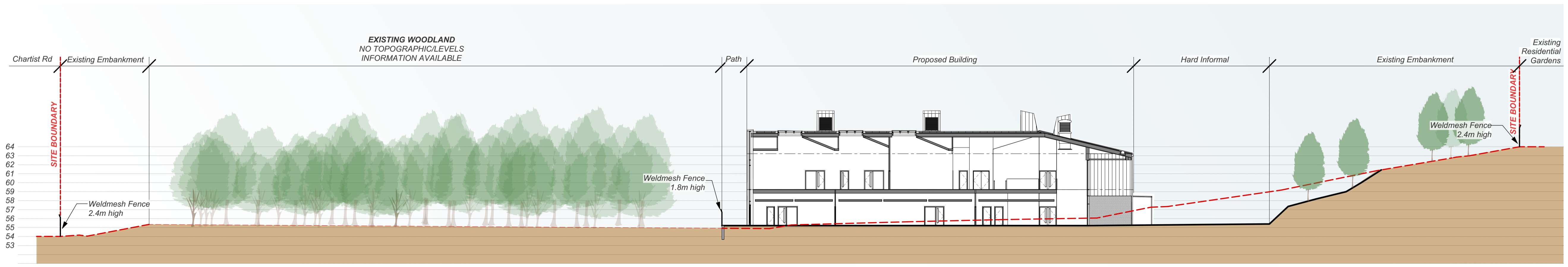
Notes
 1. Do not scale from this drawing
 2. To be read in conjunction with Project Risk Register REF: XXX
 3. To be read in conjunction with all other Landscape Architect's drawings

KEY

--- Existing Ground Level
 — Proposed Ground Level



1 Section 1-1
Scale: 1:250



2 Section 2-2
Scale: 1:250

ID	RISK	MITIGATION	DATE MITIGATED
RESIDUAL PROJECT RISKS			

DATE	REV	DESCRIPTION OF REVISION	DRAWN BY	APPROVED BY
19/10/2021	P02	Key added	LS	
REVISIONS				

STATUS
S2 - FOR PLANNING

ares LANDSCAPE ARCHITECTS
 Ares Landscape Architects LTD
 Gatecrasher,
 51 Eyre Lane
 Sheffield
 S1 4RB
 t: 0114 276 2000
 e: hello@aresdesign.co.uk
 w: ares.eu.com

CLIENT:
Sheppard Robson Architects

PROJECT TITLE:
Penygawsi Primary School

DRAWING TITLE:
Site Sections 1 of 2

DRAWING SCALE: NTS	DRAWN BY: MDS	DRAWN DATE: 04/08/2021
PAPER SIZE: A1	APPROVED BY: LS	ALA PROJECT CODE: ALA679

DRAWING NUMBER: **RH0401-ALA-00-XX-DR-L-00015 S2** STATUS: **P02** REVISION: