



Notes
 1. Do not scale from this drawing
 2. To be read in conjunction with Project Risk Register REF: XXX
 3. To be read in conjunction with all other Landscape Architect's drawings

- KEY**
- (A) Staff and Visitor Car Parking
Accessible spaces - 2
Parking bays - 41
 - (B) Cycle Shelter
Cycle stand number to be increased subject to further coordination with Transport Assessment
 - (C) Nursery Play Area
 - (D) Reception Play Area
 - (E) KS1 Play Area
 - (F) Hard Informal Play Area
 - (G) Bin Store
 - (H) Sprinkler Tank
 - (I) Air Source Heat Pump
 - (J) MUGA
2no Court
 - (K) Outdoor Canopy
 - (L) Outdoor Seating
 - (M) Soft Informal Play Area
 - (N) Potential Trim Trail
 - (O) Dry Attenuation

ID	RISK	MITIGATION	DATE MITIGATED
RESIDUAL PROJECT RISKS			

DATE	REV	DESCRIPTION OF REVISION	DRAWN BY	APPROVED BY
14/10/2021	P06	Spelling correction Address of road name Note added on cycle stand	MDS	BH
04/10/2021	P05	Issued for Planning	MDS	BH
01/10/2021	P04	Issued for RIBA Stage 3	MDS	BH

REVISIONS

STATUS
S2 - FOR PLANNING

ares LANDSCAPE ARCHITECTS

Ares Landscape Architects LTD
 Gatecrasher,
 51 Eyre Lane
 Sheffield
 S1 4RB
 t: 0114 276 2000
 e: hello@aresdesign.co.uk
 w: ares.eu.com

CLIENT:
Sheppard Robson Architects

PROJECT TITLE:
Pontyclun Primary School

DRAWING TITLE:
Landscape Masterplan

DRAWING SCALE: 1:500
 PAPER SIZE: A1

DRAWN BY: MDS
 APPROVED BY: LS

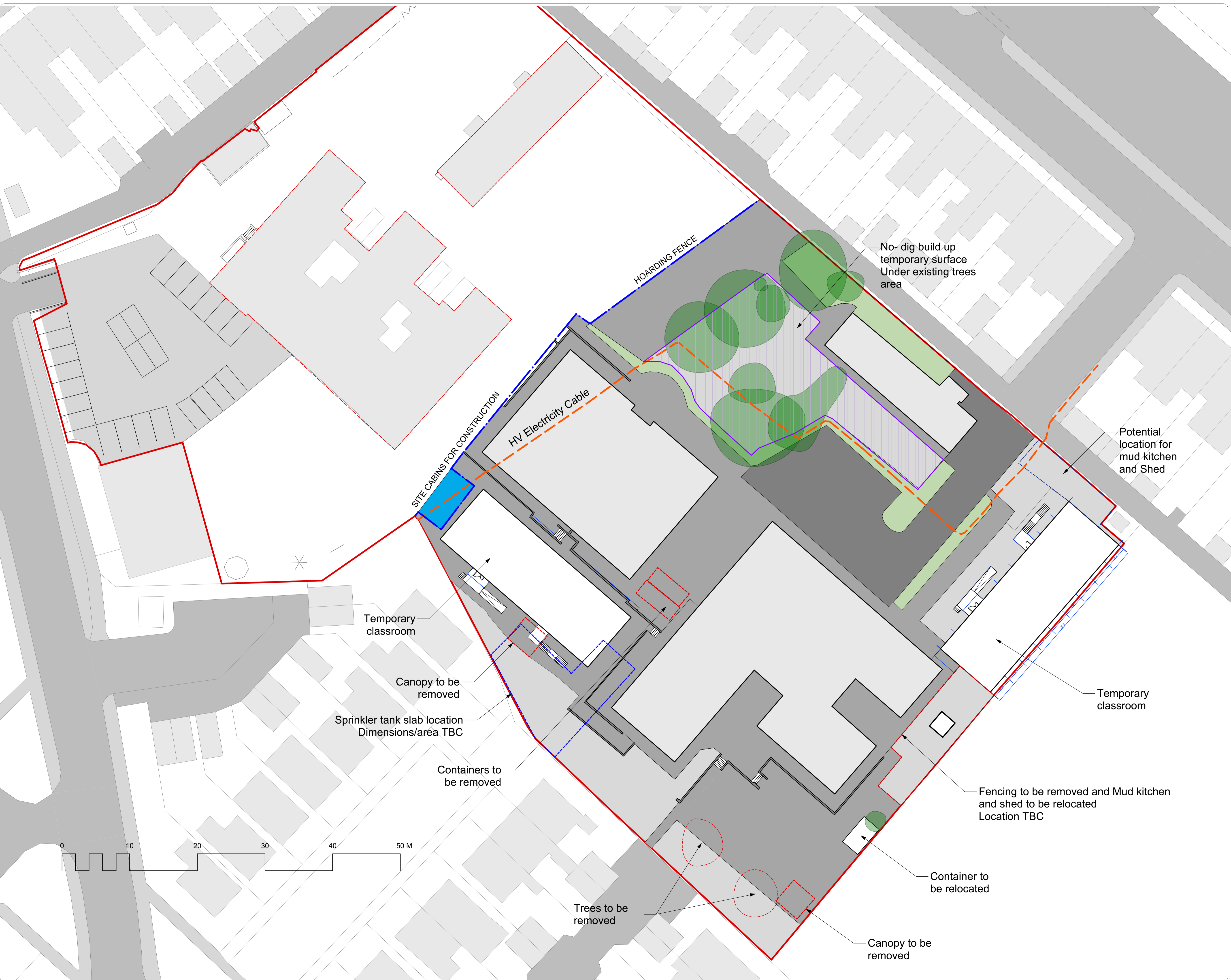
DRAWN DATE: 25/05/2021
 ALA PROJECT CODE: ALA679

DRAWING NUMBER: **RH0201-ALA-00-XX-DR-L-00005 S2**
 STATUS: **S2**
 REVISION: **P06**

Notes
 1. Do not scale from this drawing
 2. To be read in conjunction with Project Risk Register REF: XXX
 3. To be read in conjunction with all other Landscape Architect's drawings

KEY

- Existing Building
- Existing to be demolished
- Temporary Classroom
- Existing Vehicular Tarmac
- Existing Pedestrian Tarmac
- Proposed Provisional Paving to Increase Play Area During Construction
- Proposed no-dig build up Temporary surface under exist to Increase Play Area During Construction
- Existing Grass/soft areas
- Existing Wall



ID	RISK	MITIGATION	DATE MITIGATED
RESIDUAL PROJECT RISKS			

DATE	REV	DESCRIPTION OF REVISION	DRAWN BY	APPROVED BY
18/10/2021	P03	Amended following Planning Consultant comments	MDS	BH
04/10/2021	P02	Issued for Planning	MDS	BH
04/10/2021	P01	Issued for RIBA Stage 3	MDS	BH

REVISIONS

STATUS
S2 - FOR PLANNING

ares LANDSCAPE ARCHITECTS

Ares Landscape Architects LTD
 Gatecrasher,
 51 Eyre Lane
 Sheffield
 S1 4RB
 t: 0114 276 2000
 e: hello@aresdesign.co.uk
 w: ares.eu.com

CLIENT:
Sheppard Robson Architects

PROJECT TITLE:
Pontyclun Primary School

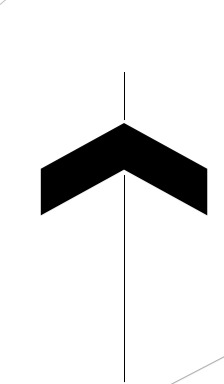
DRAWING TITLE:
Temporary Site Wide Masterplan

DRAWING SCALE: 1:250
 PAPER SIZE: A1

DRAWN BY: MDS
 APPROVED BY: LS

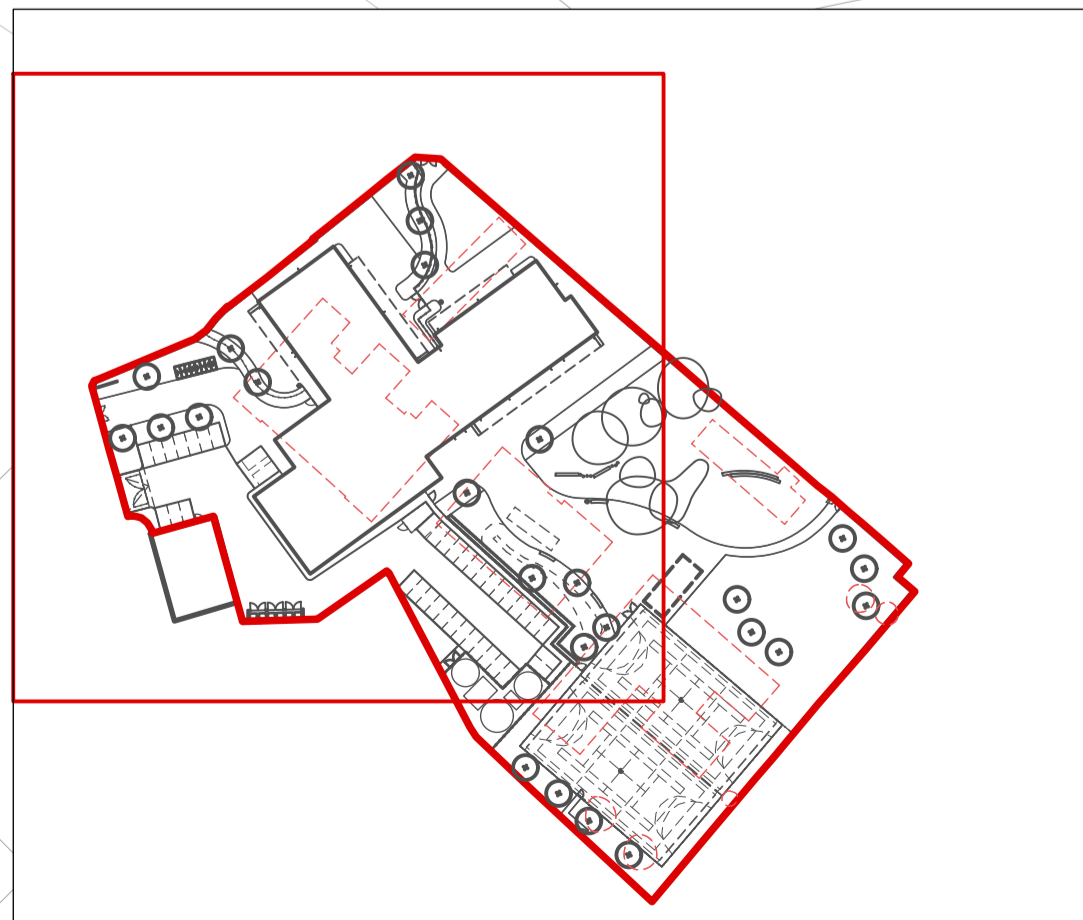
DRAWN DATE: 01/10/2021
 ALA PROJECT CODE: ALA679

DRAWING NUMBER: **RH0201-ALA-00-XX-DR-L-00021 S2** STATUS: **S2** REVISION: **P03**



COWBRIDGE ROAD

HEOL-Y-FELIN



LOCATION PLAN



- Notes**
1. Do not scale from this drawing
 2. To be read in conjunction with Project Risk Register REF: XXX
 3. To be read in conjunction with all other Landscape Architect's drawings

KEY

- Site Boundary
- Proposed Building
- Existing Building to be demolished
- Existing Tree
- Existing Tree to be removed
- Planting**
 - Proposed Tree
 - Grass Seed
 - Amenity Planting
 - Hedge Planting
- Paving**
 - Pedestrian Macadam [Ref P1]
 - Vehicular Macadam [Ref P2]
 - Concrete Block Paving [Ref P3]
 - Wetpour Surface [Ref P4]
 - MUGA Permeable Surface [Ref P5]
 - Permeable Block Paving [Ref P6]
- Furniture**
 - S1 Cycle Stands
 - S2 Cycle Shelter
 - S3 Door Protection Barrier
 - S4 Seating Bench
 - S5 Litter Bin
- Fencing and Structures**
 - Proposed Fencing
 - Proposed Gates
 - W1 Existing Retaining Wall
 - S6 Canopy / Building Overhang

REFER TO DRAWING RH0201-ALA-00-XX-DR-L-00020

ID	RISK	MITIGATION	DATE MITIGATED
RESIDUAL PROJECT RISKS			

DATE	REV	DESCRIPTION OF REVISION	DRAWN BY	APPROVED BY
18/10/2021	P04	Drawing description revised	MDS	BH
14/10/2021	P03	Note added to cycle stand	MDS	BH
04/10/2021	P02	Issued for Planning	MDS	BH

REVISIONS

STATUS: **S2 - FOR PLANNING**

ares LANDSCAPE ARCHITECTS

Ares Landscape Architects LTD
Gatecrasher,
51 Eyre Lane
Sheffield
S1 4RB
t: 0114 276 2000
e: hello@aresdesign.co.uk
w: ares.eu.com

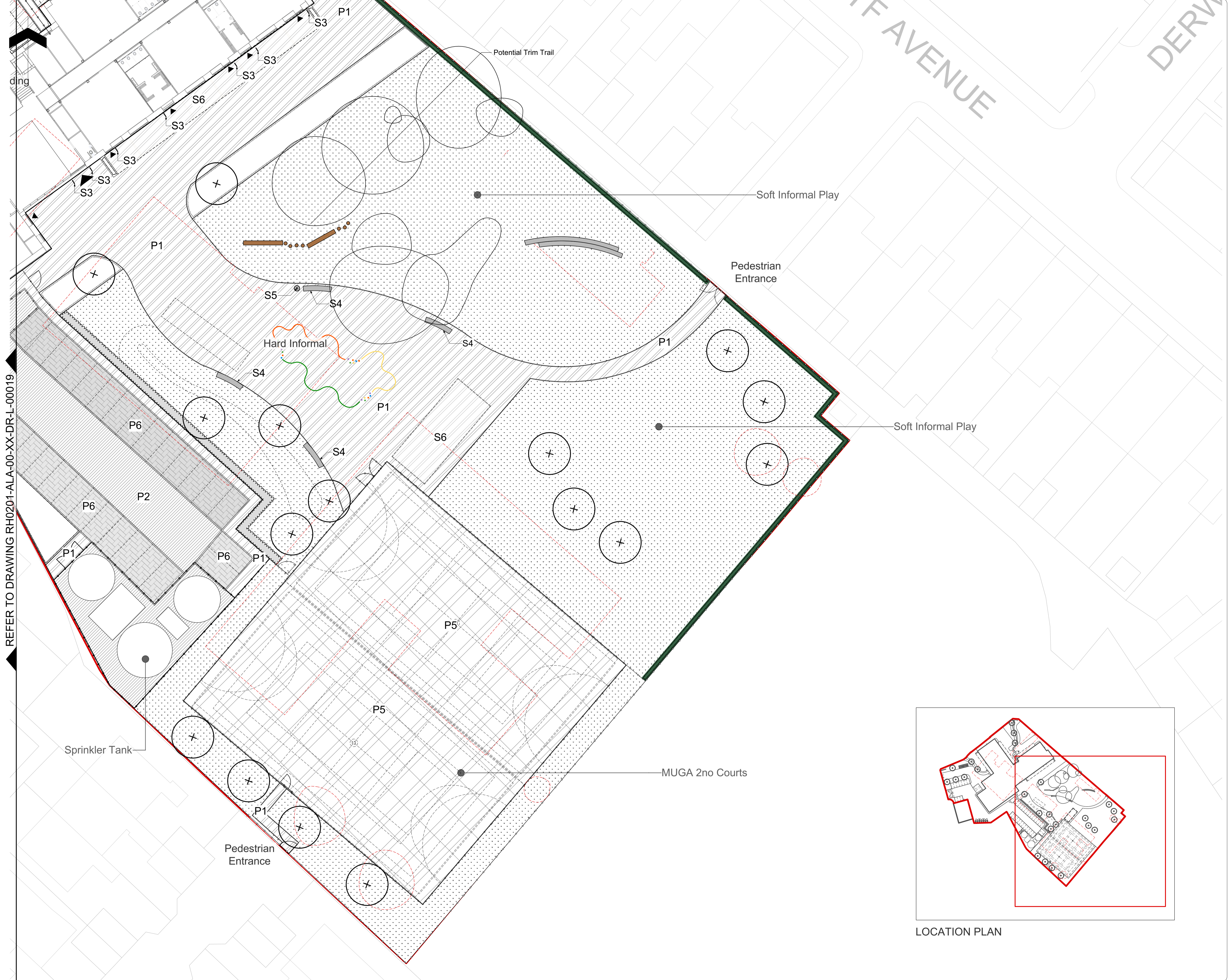
CLIENT: **Sheppard Robson Architects**

PROJECT TITLE: **Pontyclun Primary School**

DRAWING TITLE: **Detailed Hard and Soft Landscape General Arrangement 1 of 2**

DRAWING SCALE: 1:250	DRAWN BY: MDS	DRAWN DATE: 28/09/2021
PAPER SIZE: A1	APPROVED BY: LS	ALA PROJECT CODE: ALA679

DRAWING NUMBER: **RH0201-ALA-00-XX-DR-L-00019 S2** STATUS: **FOR PLANNING** REVISION: **P04**



Notes
 1. Do not scale from this drawing
 2. To be read in conjunction with Project Risk Register REF: XXX
 3. To be read in conjunction with all other Landscape Architect's drawings

KEY

- Site Boundary
- Proposed Building
- Existing Building to be demolished
- Existing Tree
- Existing Tree to be removed
- Planting**
- + Proposed Tree Specification TBC
- Grass Seed Specification TBC
- Amenity Planting Specification TBC
- Hedge Planting Specification TBC
- Paving**
- Pedestrian Macadam [Ref P1] To Engineer's Specification
- Vehicular Macadam [Ref P2] To Engineer's Specification
- Concrete Block Paving [Ref P3] Specification TBC
- Wetpour Surface [Ref P4] Specification TBC
- MUGA Permeable Surface [Ref P5] Specification TBC
- Permeable Block Paving [Ref P6] Specification TBC
- Furniture**
- S1 Cycle Stands Specification TBC
- S2 Cycle Shelter Specification TBC
- S3 Door Protection Barrier Specification TBC
- S4 Seating Bench Specification TBC
- ⊙ S5 Litter Bin Specification TBC
- Fencing and Structures**
- Proposed Fencing Refer to Fencing and Security Strategy for details
- Proposed Gates Refer to Fencing and Security Strategy for details
- W1 Existing Retaining Wall
- S6 Canopy / Building Overhang

ID	RISK	MITIGATION	DATE MITIGATED
RESIDUAL PROJECT RISKS			

DATE	REV	DESCRIPTION OF REVISION	DRAWN BY	APPROVED BY
18/10/2021	P03	Drawing description revised	MDS	BH
04/10/2021	P02	Issued for Planning	MDS	BH
04/10/2021	P01	Issued for RIBA Stage 3	MDS	BH

REVISIONS

STATUS
S2 - FOR PLANNING

ares

LANDSCAPE ARCHITECTS

Ares Landscape Architects LTD
 Gatecrasher,
 51 Eyre Lane
 Sheffield
 S1 4RB
 t: 0114 276 2000
 e: hello@aresdesign.co.uk
 w: ares.eu.com

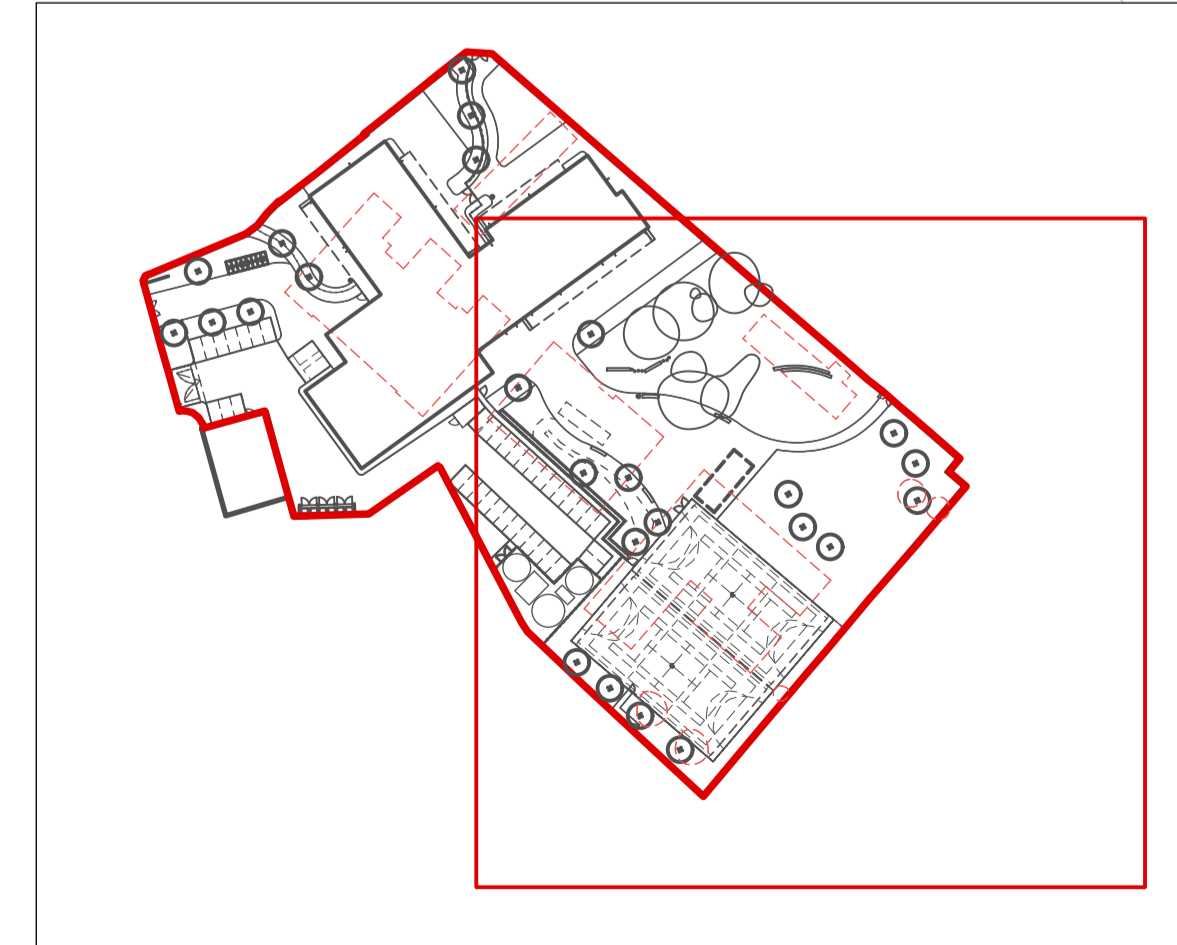
CLIENT:
Sheppard Robson Architects

PROJECT TITLE:
Pontyclun Primary School

DRAWING TITLE:
Detailed Hard and Soft Landscape General Arrangement 2 of 2

DRAWING SCALE: 1:250
 DRAWN BY: MDS
 PAPER SIZE: A1
 APPROVED BY: LS
 DRAWN DATE: 28/09/2021
 ALA PROJECT CODE: ALA679

DRAWING NUMBER: **RH0201-ALA-00-XX-DR-L-00020 S2** STATUS: **S2** REVISION: **P03**



LOCATION PLAN



Notes
 1. Do not scale from this drawing
 2. To be read in conjunction with Project Risk Register REF: XXX
 3. To be read in conjunction with all other Landscape Architect's drawings

KEY

	F1 Metal Hoop Top Fencing 1.2m Height Specification TBC
	F2 Perimeter Security Fencing 2.4m Height Weldmesh Specification TBC
	F3 Internal Security Fencing 1.8m Height Weldmesh Specification TBC
	F4 MUGA Sports Fencing 3m Height Weldmesh Specification TBC
	F5 Sprinkler Tank Fencing 3m Height Closeboard Timber Specification TBC
	F6 Air Source Heat Pump Fencing 1.8m Height Metal Louvers Specification TBC
	F7 Bin Store Enclosure Brick Specification TBC
	G1 Single Leaf Gates Specification TBC
	G2 Double Leaf Gates Specification TBC



ID	RISK	MITIGATION	DATE MITIGATED
RESIDUAL PROJECT RISKS			

DATE	REV	DESCRIPTION OF REVISION	DRAWN BY	APPROVED BY
04/10/2021	P03	Issued for Planning	MDS	BH
01/10/2021	P02	Issued for RIBA stage 3	MDS	BH

REVISIONS

STATUS
S2 - FOR PLANNING

ares LANDSCAPE ARCHITECTS

Ares Landscape Architects LTD
 Gatecrasher,
 51 Eyre Lane
 Sheffield
 S1 4RB
 t: 0114 276 2000
 e: hello@aresdesign.co.uk
 w: ares.eu.com

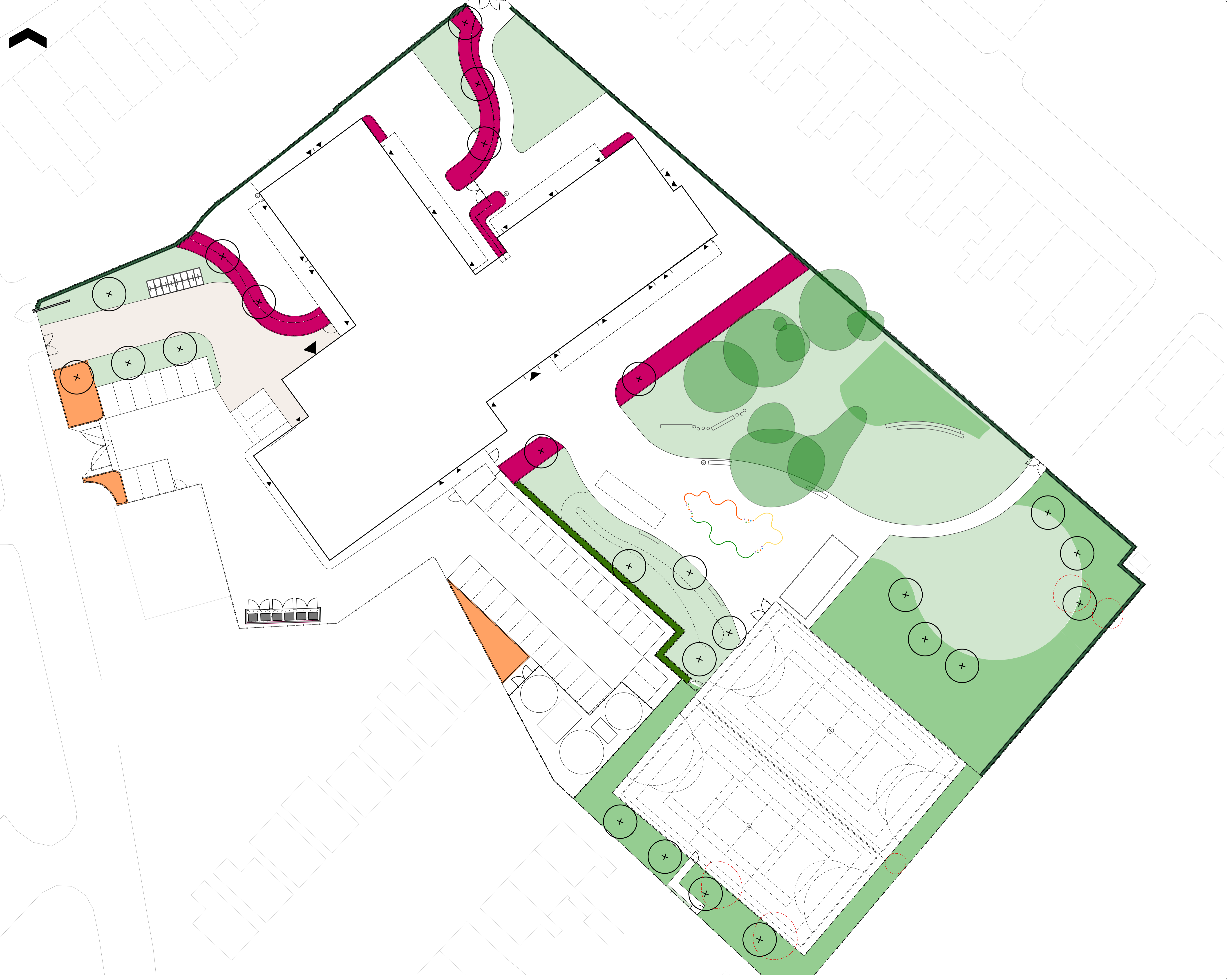
CLIENT:
Sheppard Robson Architects

PROJECT TITLE:
Pontyclun Primary School

DRAWING TITLE:
Fencing and Security Layout

DRAWING SCALE: 1:250	DRAWN BY: MDS	DRAWN DATE: 25/05/2021
PAPER SIZE: A1	APPROVED BY: LS	ALA PROJECT CODE: ALA679

DRAWING NUMBER: **RH0201-ALA-00-XX-DR-L-00007 S2** STATUS: **S2** REVISION: **P03**



Notes
 1. Do not scale from this drawing
 2. To be read in conjunction with Project Risk Register REF: XXX
 3. To be read in conjunction with all other Landscape Architect's drawings

- KEY**
- Existing trees to be retained
 - Existing tree removed
 - + Proposed tree
To include native species as RCT tree policy indicates single species not to exceed 10% as a climate change resilience measure. Trees on rain gardens to have tolerant of drought and water-logging
 - Proposed amenity grass
Mowed regularly to allow activities and play opportunities
 - Proposed Bio-diverse grass area
To include bulbs; grass seeds to be sown at less rate to allow natural regeneration of native seedbank. Mowed less regularly.
 - Proposed amenity planting
Robust Shrubs Planting to provide screening and contribute to biodiversity
 - Rain gardens
Proposed planting species in line of RCT biodiversity policies and feedback. Species capable to tolerate drought and water-logging periods
 - Ivy Screening
Ivy screening installed along school boundary as shown, aiming to improve screening and air quality
 - Proposed hedge
Comprised of more than one native species

ID	RISK	MITIGATION	DATE MITIGATED
RESIDUAL PROJECT RISKS			

DATE	REV	DESCRIPTION OF REVISION	DRAWN BY	APPROVED BY
04/10/2021	P02	Issued for Planning	MDS	BH
04/10/2021	P01	Issued for RIBA Stage 3	MDS	BH

REVISIONS

STATUS
S2 - FOR PLANNING

ares LANDSCAPE ARCHITECTS
 Ares Landscape Architects LTD
 Gatecrasher,
 51 Eyre Lane
 Sheffield
 S1 4RB
 t: 0114 276 2000
 e: hello@aresdesign.co.uk
 w: ares.eu.com

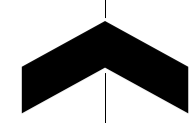
CLIENT:
Sheppard Robson Architects

PROJECT TITLE:
Pontyclun Primary School

DRAWING TITLE:
Planting Strategy

DRAWING SCALE: 1:500
 PAPER SIZE: A1
 DRAWN BY: MDS
 APPROVED BY: LS
 DRAWN DATE: 28/09/2021
 ALA PROJECT CODE: ALA679

DRAWING NUMBER: RH0201-ALA-00-XX-DR-L-00013 S2
 STATUS: S2
 REVISION: P02



Notes
 1. Do not scale from this drawing
 2. To be read in conjunction with Project Risk Register REF: XXX
 3. To be read in conjunction with all other Landscape Architect's drawings

KEY

RESIDUAL PROJECT RISKS

ID	RISK	MITIGATION	DATE MITIGATED

REVISIONS

DATE	REV	DESCRIPTION OF REVISION	DRAWN BY	APPROVED BY
04/10/2021	P02	Issued for Planning	MDS	BH
04/10/2021	P01	Issued for RIBA Stage 3	MDS	BH

STATUS
S2 - FOR PLANNING

ares LANDSCAPE ARCHITECTS
 Ares Landscape Architects LTD
 Gatecrasher,
 51 Eyre Lane
 Sheffield
 S1 4RB
 t: 0114 276 2000
 e: hello@aresdesign.co.uk
 w: ares.eu.com

CLIENT:
Sheppard Robson Architects

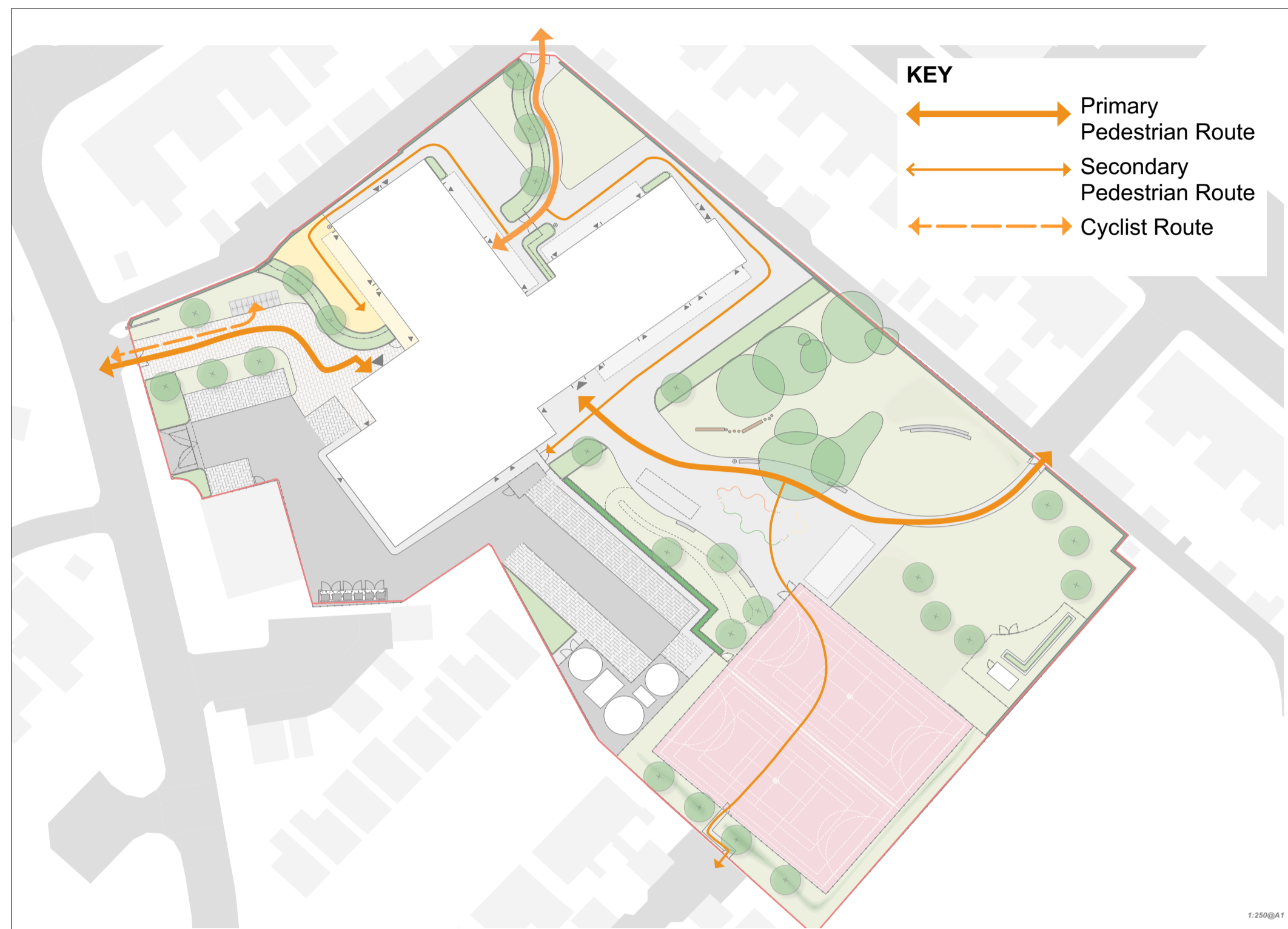
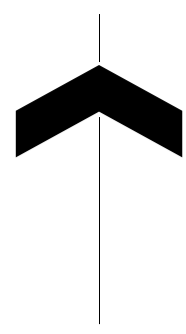
PROJECT TITLE:
Pontyclun Primary School

DRAWING TITLE:
Outline Levels

DRAWING SCALE: 1:500
PAPER SIZE: A1
DRAWN BY: MDS
APPROVED BY: LS
DRAWN DATE: 29/07/2021
ALA PROJECT CODE: ALA679

DRAWING NUMBER: RH0201-ALA-00-XX-DR-L-00014 S2
STATUS: S2
REVISION: P02

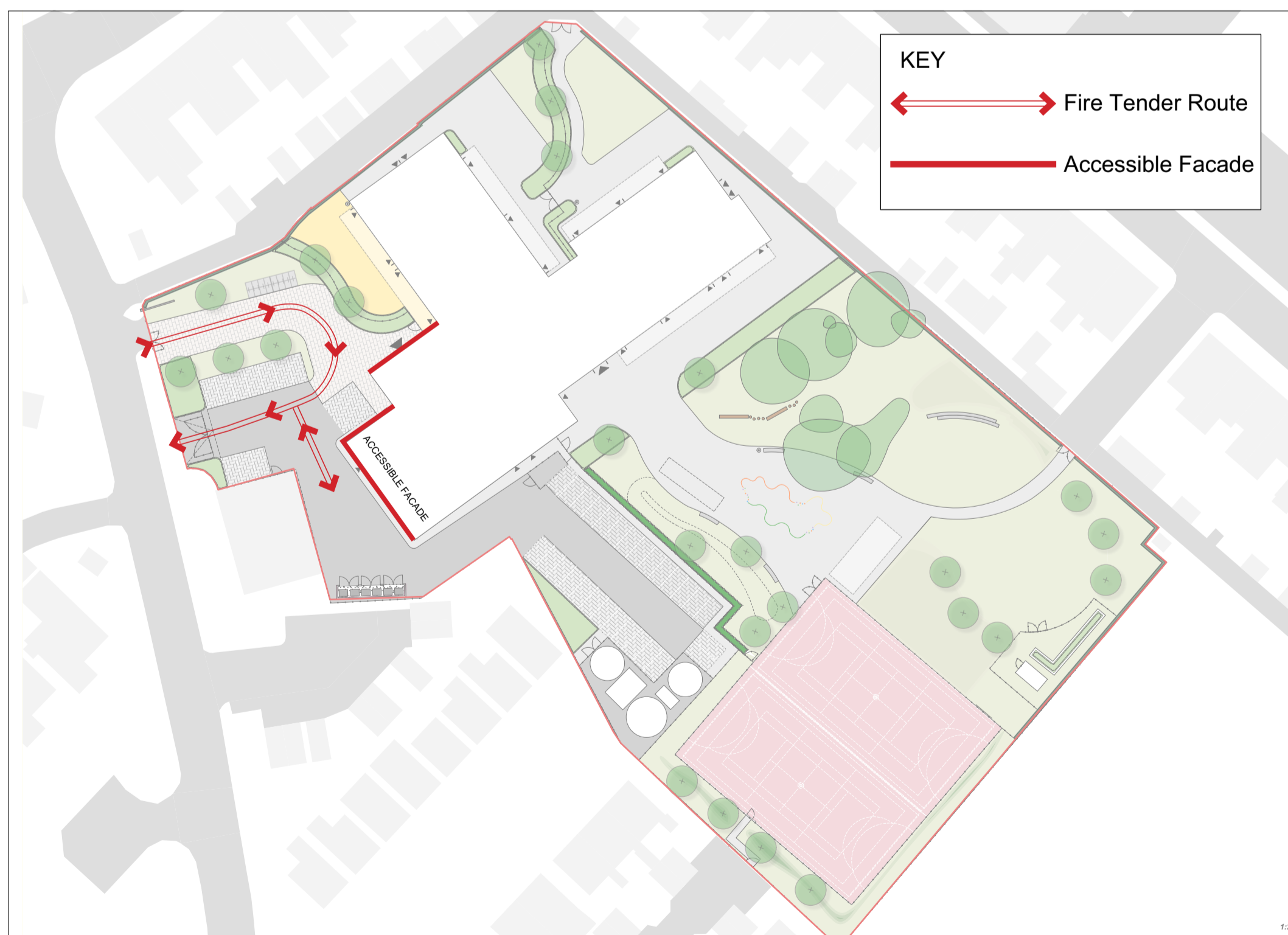




PEDESTRIAN AND CYCLIST CIRCULATION



VEHICULAR AND SERVICES CIRCULATION



FIRE TENDER CIRCULATION AND ACCESSIBLE FACADE

Notes
 1. Do not scale from this drawing
 2. To be read in conjunction with Project Risk Register REF: XXX
 3. To be read in conjunction with all other Landscape Architect's drawings

KEY

ID	RISK	MITIGATION	DATE MITIGATED
RESIDUAL PROJECT RISKS			

DATE	REV	DESCRIPTION OF REVISION	DRAWN BY	APPROVED BY
18/10/2021	P04	Amended for Planning	MDS	BH
04/10/2021	P03	Issued for Planning	MDS	BH
28/09/2021	P02	Issued for RIBA Stage 3	MDS	BH

REVISIONS

STATUS
S2 - FOR PLANNING

ares LANDSCAPE ARCHITECTS
 Ares Landscape Architects LTD
 Gatecrasher,
 51 Eyre Lane
 Sheffield
 S1 4RB
 t: 0114 276 2000
 e: hello@aresdesign.co.uk
 w: ares.eu.com

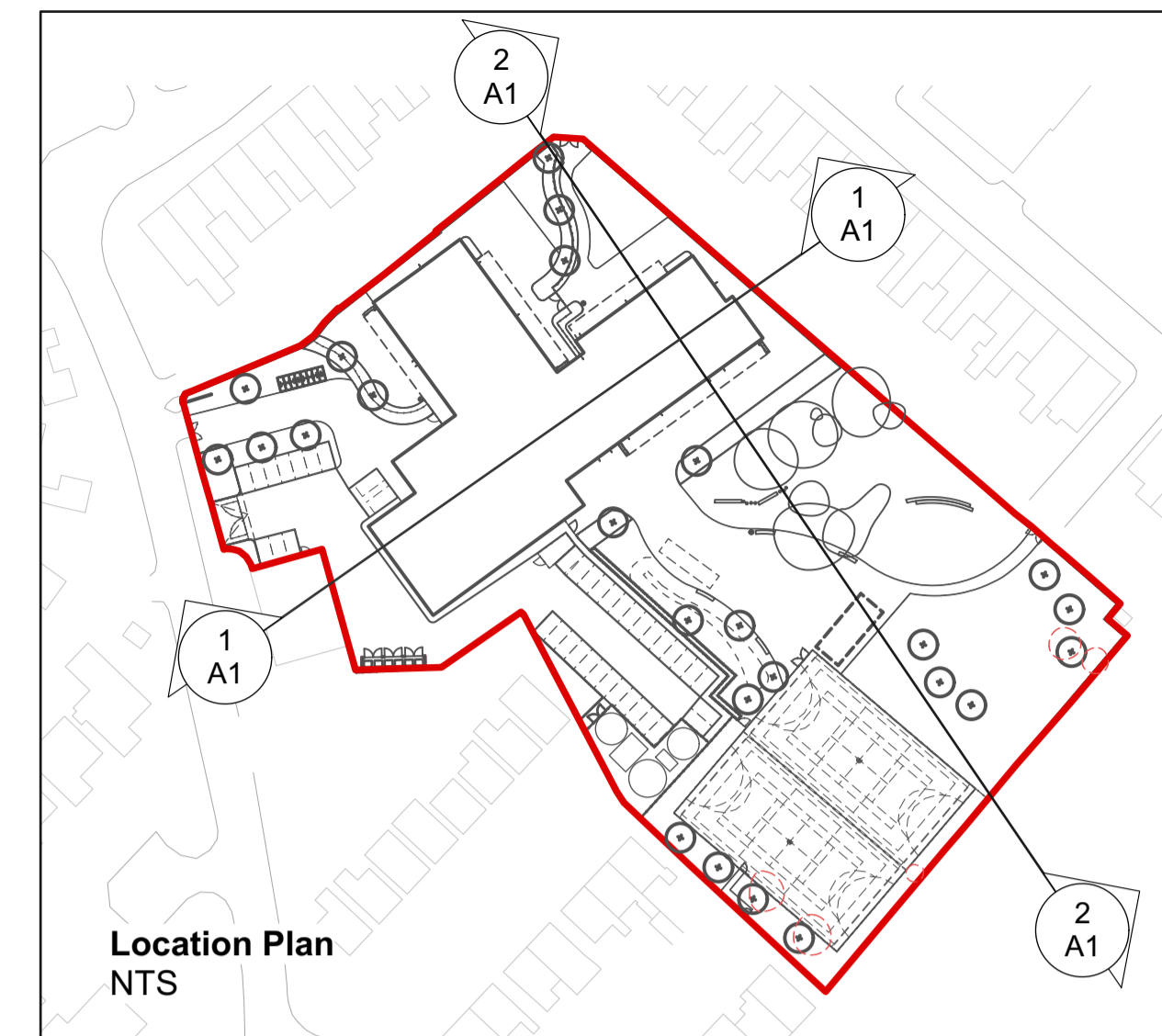
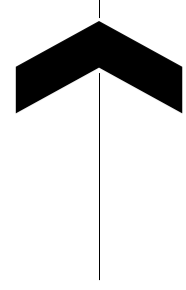
CLIENT:
Sheppard Robson Architects

PROJECT TITLE:
Pontyclun Primary School

DRAWING TITLE:
Access and Circulation

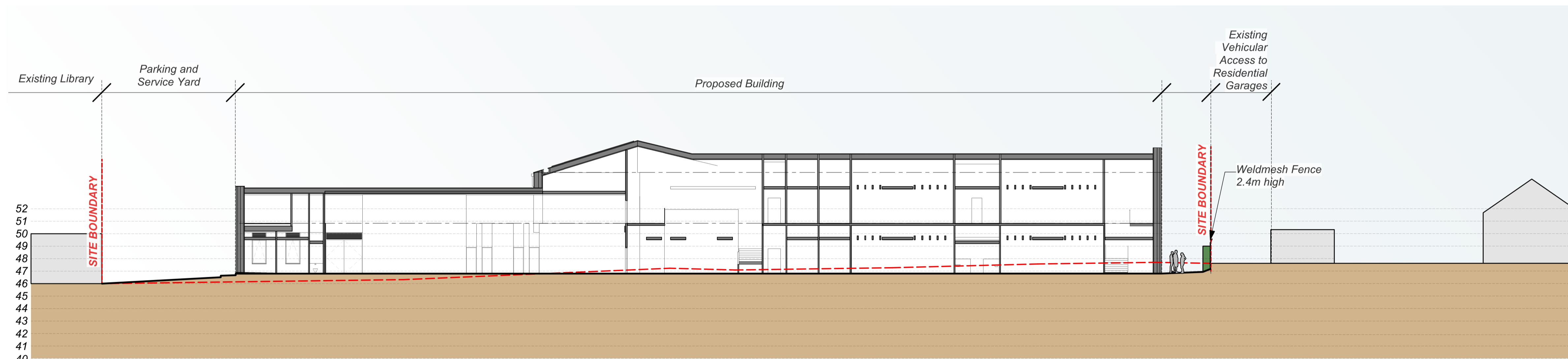
DRAWING SCALE: NTS	DRAWN BY: MDS	DRAWN DATE: 25/05/2021
PAPER SIZE: A1	APPROVED BY: LS	ALA PROJECT CODE: ALA679

DRAWING NUMBER: **RH0201-ALA-00-XX-DR-L-00008 S2** STATUS: **S2** REVISION: **P04**

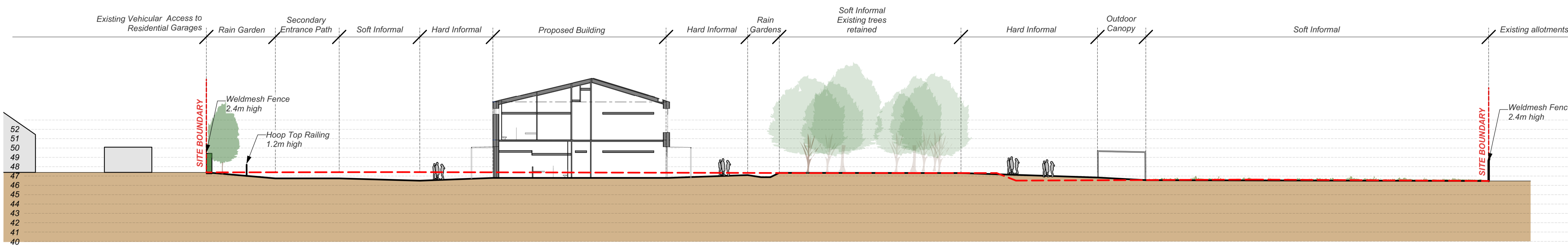


Notes
 1. Do not scale from this drawing
 2. To be read in conjunction with Project Risk Register REF: XXX
 3. To be read in conjunction with all other Landscape Architect's drawings

KEY
 - - - Existing Ground Level
 — Proposed Ground Level



1 Section 1-1
 Scale: 1:200



2 Section 1-1
 Scale: 1:250

ID	RISK	MITIGATION	DATE MITIGATED
RESIDUAL PROJECT RISKS			

DATE	REV	DESCRIPTION OF REVISION	DRAWN BY	APPROVED BY
19/10/2021	P03	Key added	MDS	BH
04/10/2021	P02	Issued for Planning	MDS	BH
04/10/2021	P01	Issued for RIBA Stage 3	MDS	BH

STATUS
S2 - FOR PLANNING

ares LANDSCAPE ARCHITECTS
 Ares Landscape Architects LTD
 Gatecrasher,
 51 Eyre Lane
 Sheffield
 S1 4RB
 t: 0114 276 2000
 e: hello@aresdesign.co.uk
 w: ares.eu.com

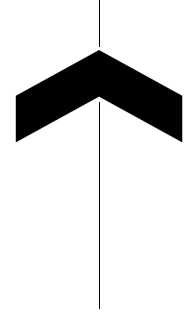
CLIENT:
Sheppard Robson Architects

PROJECT TITLE:
Pontyclun Primary School

DRAWING TITLE:
Site Sections 1 of 3

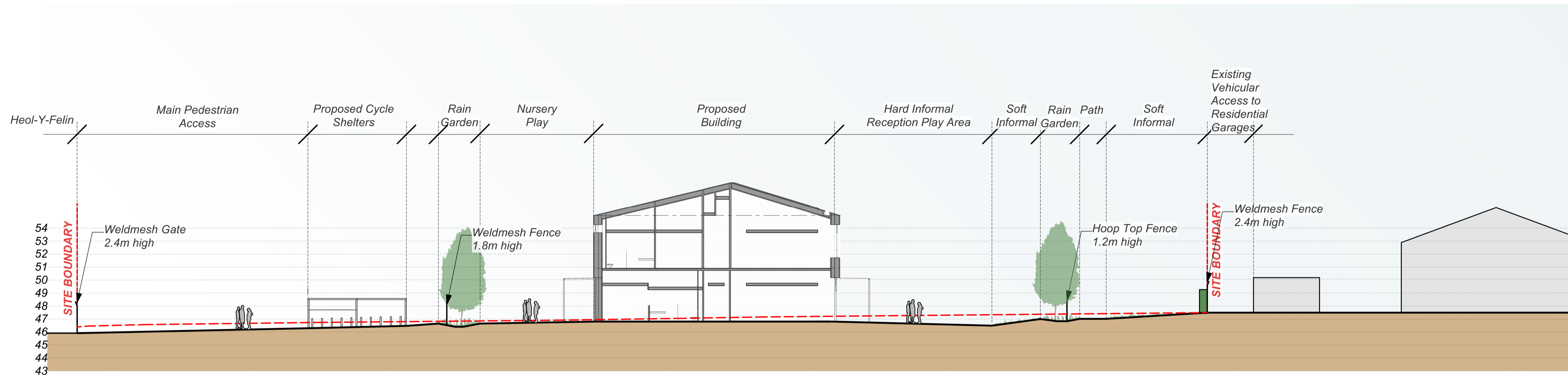
DRAWING SCALE: NTS	DRAWN BY: MDS	DRAWN DATE: 28/09/2021
PAPER SIZE: A1	APPROVED BY: LS	ALA PROJECT CODE: ALA679

DRAWING NUMBER: **RH0201-ALA-00-XX-DR-L-00015 S2** STATUS: **REVISION: P03**

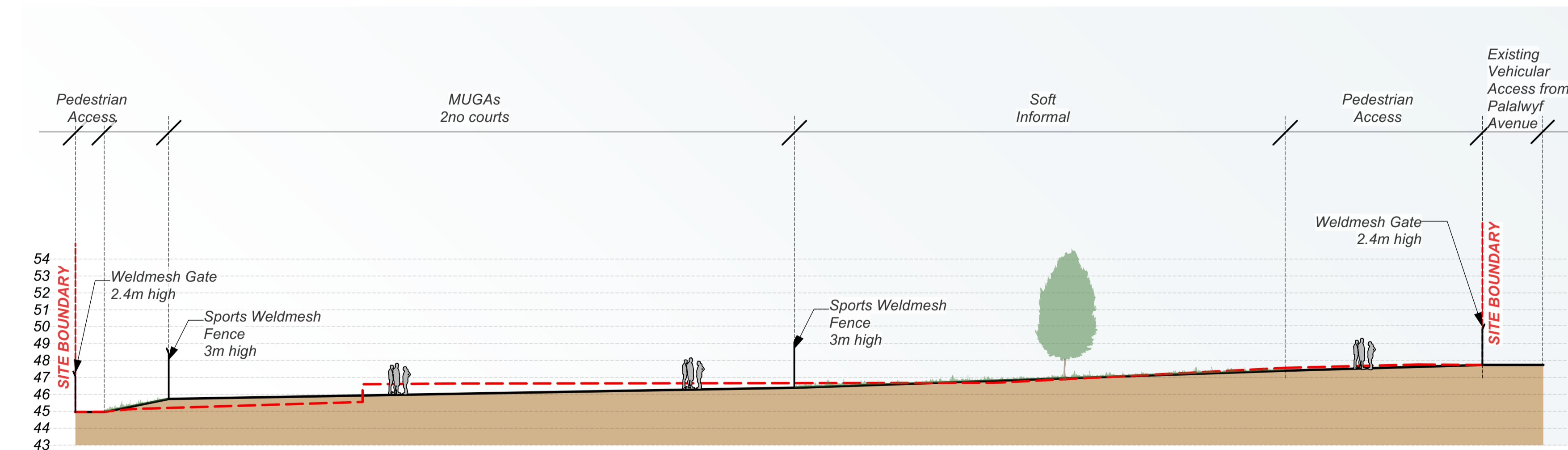


Notes
 1. Do not scale from this drawing
 2. To be read in conjunction with Project Risk Register REF: XXX
 3. To be read in conjunction with all other Landscape Architect's drawings

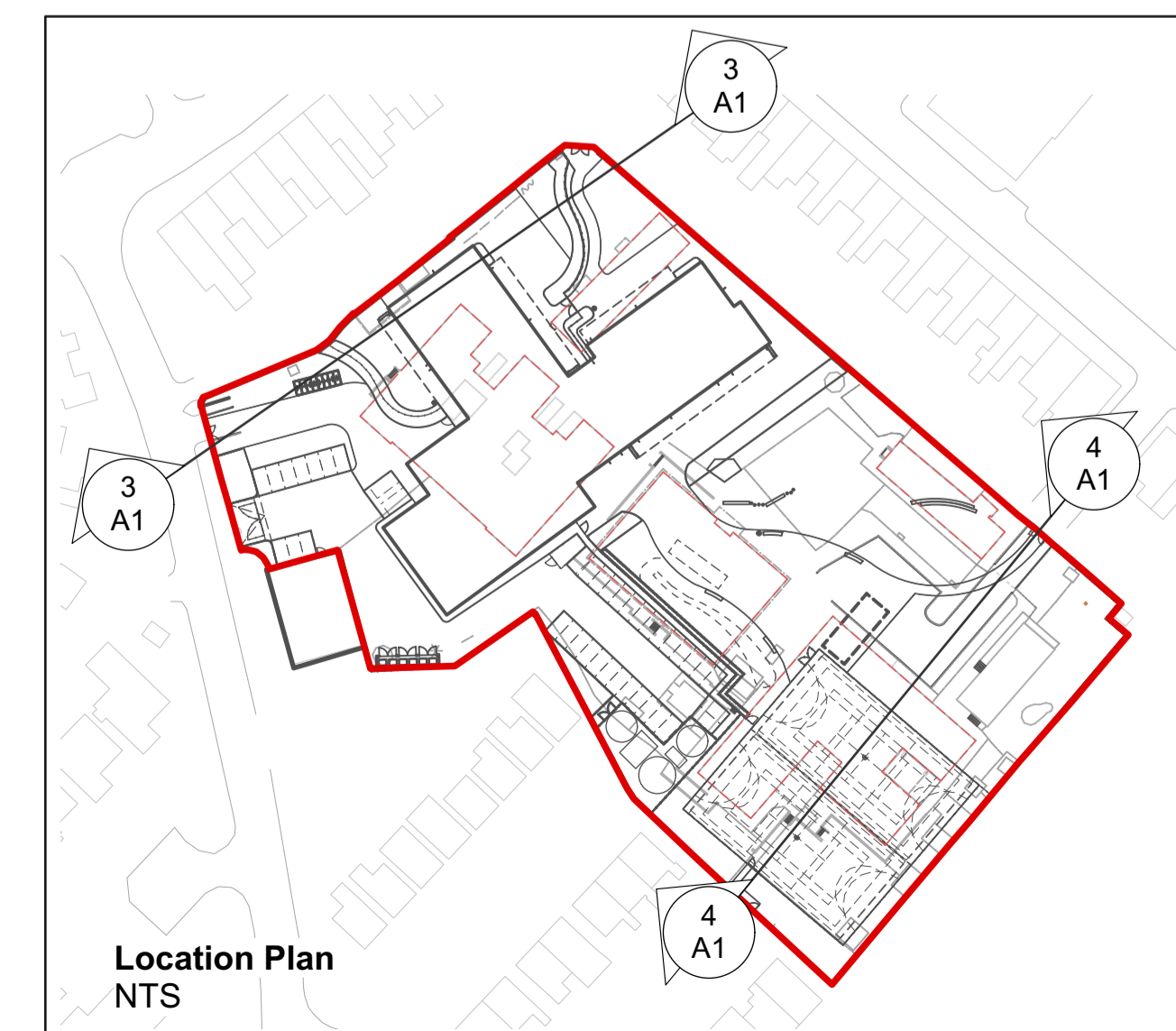
KEY
 - - - - - Existing Ground Level
 _____ Proposed Ground Level



1 Section 3-3
 Scale: 1:200



2 Section 4-4
 Scale: 1:200



ID	RISK	MITIGATION	DATE MITIGATED
RESIDUAL PROJECT RISKS			

DATE	REV	DESCRIPTION OF REVISION	DRAWN BY	APPROVED BY
19/10/2021	P02	Key added	MDS	

REVISIONS

STATUS
S2 - FOR PLANNING

ares LANDSCAPE ARCHITECTS
 Ares Landscape Architects LTD
 Gatecrasher,
 51 Eyre Lane
 Sheffield
 S1 4RB
 t: 0114 276 2000
 e: hello@aresdesign.co.uk
 w: ares.eu.com

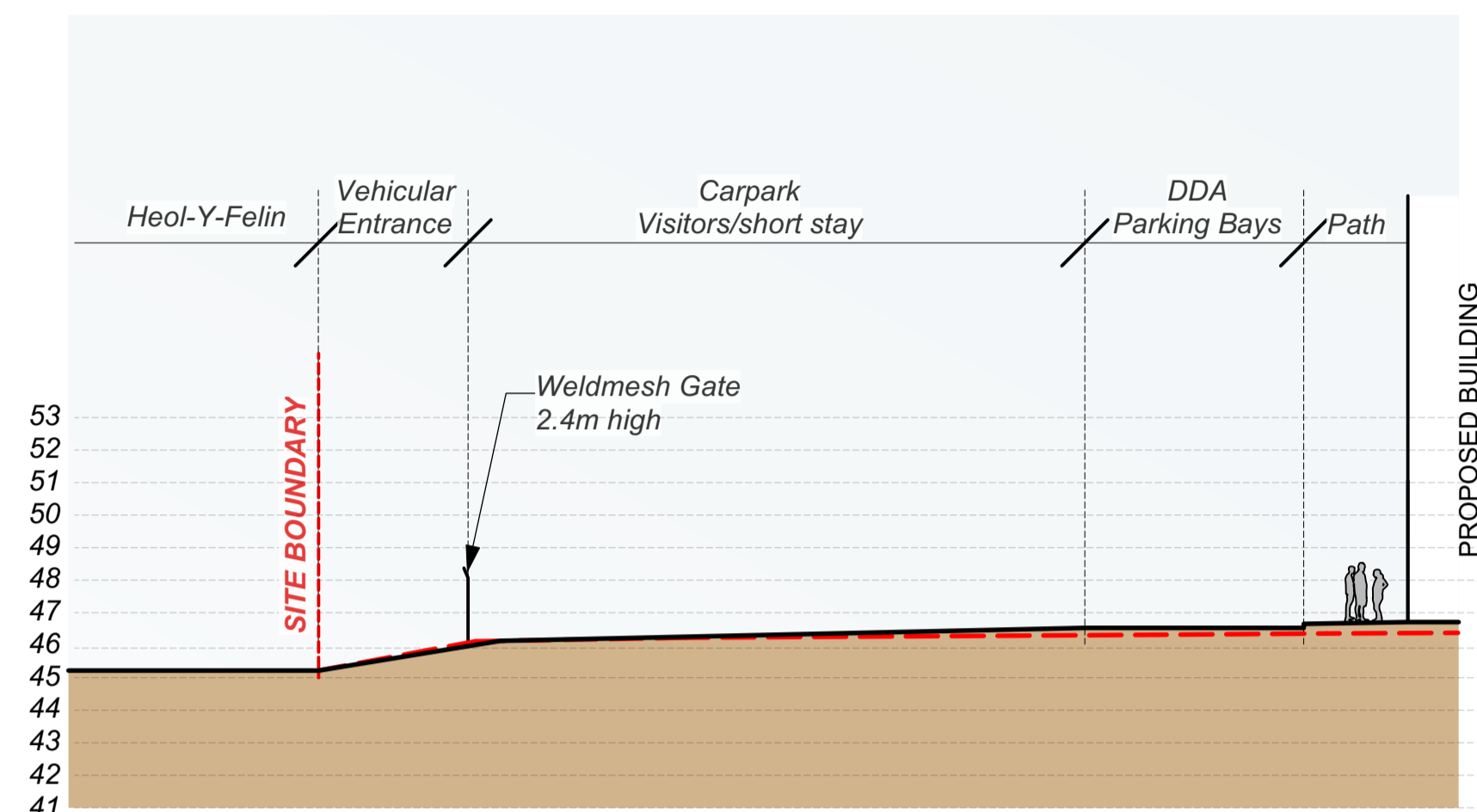
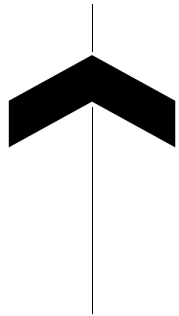
CLIENT:
Sheppard Robson Architects

PROJECT TITLE:
Pontyclun Primary School

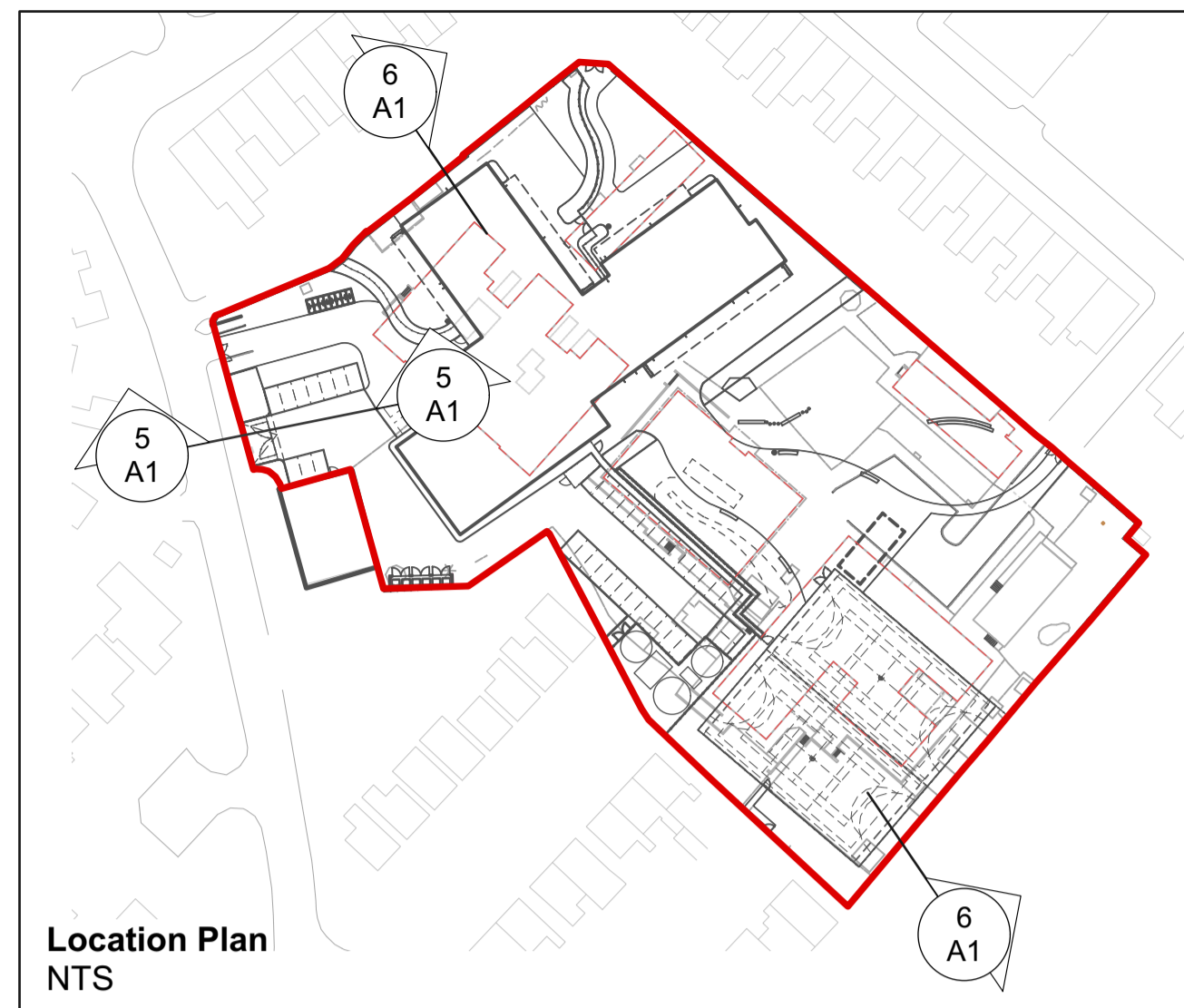
DRAWING TITLE:
Site Sections 2 of 3

DRAWING SCALE: NTS	DRAWN BY: MDS	DRAWN DATE: 28/09/2021
PAPER SIZE: A1	APPROVED BY: LS	ALA PROJECT CODE: ALA679

DRAWING NUMBER: **RH0201-ALA-00-XX-DR-L-00016 S2** STATUS: **P02** REVISION:

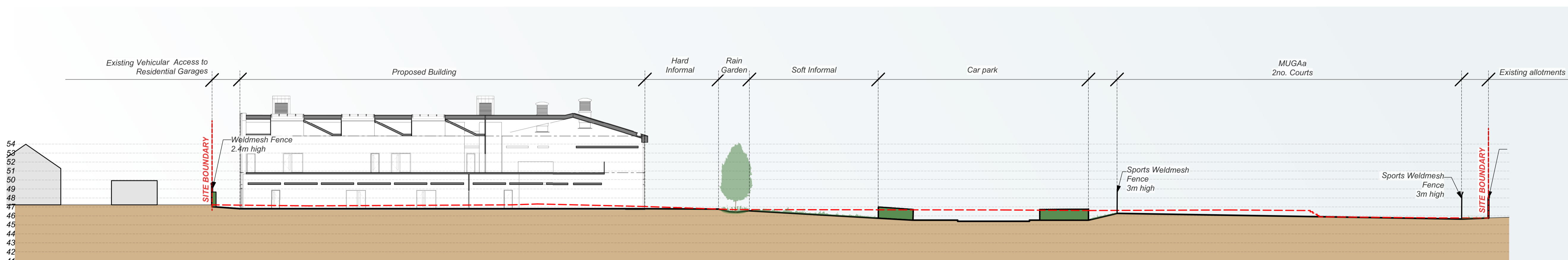


1 Section 5-5
Scale: 1:200



Notes
 1. Do not scale from this drawing
 2. To be read in conjunction with Project Risk Register REF: XXX
 3. To be read in conjunction with all other Landscape Architect's drawings

KEY
 - - - Existing Ground Level
 — Proposed Ground Level



2 Section 6-6
Scale: 1:200

ID	RISK	MITIGATION	DATE MITIGATED
RESIDUAL PROJECT RISKS			

DATE	REV	DESCRIPTION OF REVISION	DRAWN BY	APPROVED BY
19/10/2021	P02	Key added	MDS	

REVISIONS

STATUS
S2 - FOR PLANNING

ares LANDSCAPE ARCHITECTS
 Ares Landscape Architects LTD
 Gatecrasher,
 51 Eyre Lane
 Sheffield
 S1 4RB
 t: 0114 276 2000
 e: hello@aresdesign.co.uk
 w: ares.eu.com

CLIENT:
Sheppard Robson Architects

PROJECT TITLE:
Pontyclun Primary School

DRAWING TITLE:
Site Sections 3 of 3

DRAWING SCALE: NTS	DRAWN BY: MDS	DRAWN DATE: 28/09/2021
PAPER SIZE: A1	APPROVED BY: LS	ALA PROJECT CODE: ALA679

DRAWING NUMBER: **RH0201-ALA-00-XX-DR-L-00017 S2** STATUS: **P02** REVISION:



ares
LANDSCAPE
ARCHITECTS

Ares Landscape Architects
Sheffield | London | Cheltenham
51 Eyre Lane, Sheffield, S1 4RB
0114 276 2000

STATUS
S2 PLANNING

CLIENT
SHEPPARD ROBSON ARCHITECTS

PROJECT TITLE
PONTYCLUN PRIMARY SCHOOL

DRAWING TITLE
LANDSCAPE VISUALISATIONS

DRAWING NUMBER	STATUS	REVISION
RH0201-ALA-00-XX-DR-L-00022	S2	P01